

PIRANHA P6 CC | SURFACE MOUNT

PIRANHA
 — SERIES —



PIRANHA P6 Colour Changing LED Underwater Light produces 2700 fixture lumens and gives you the flexibility to showcase your boat in the colour of your choice.

Lights are controlled with a simple on/off toggle switch or I.Y.S Control system* to select and stay on the desired colour or strobe (flashing) mode.

Suitable for all types of boats, perfect for transom and side mounting on all hull types. Incredibly simple to install just one small cable entry hole and 3 mounting screws, reverse polarity protection with in built driver technology.

New Hydro Block Technology.

Suitable for in and out of water use.

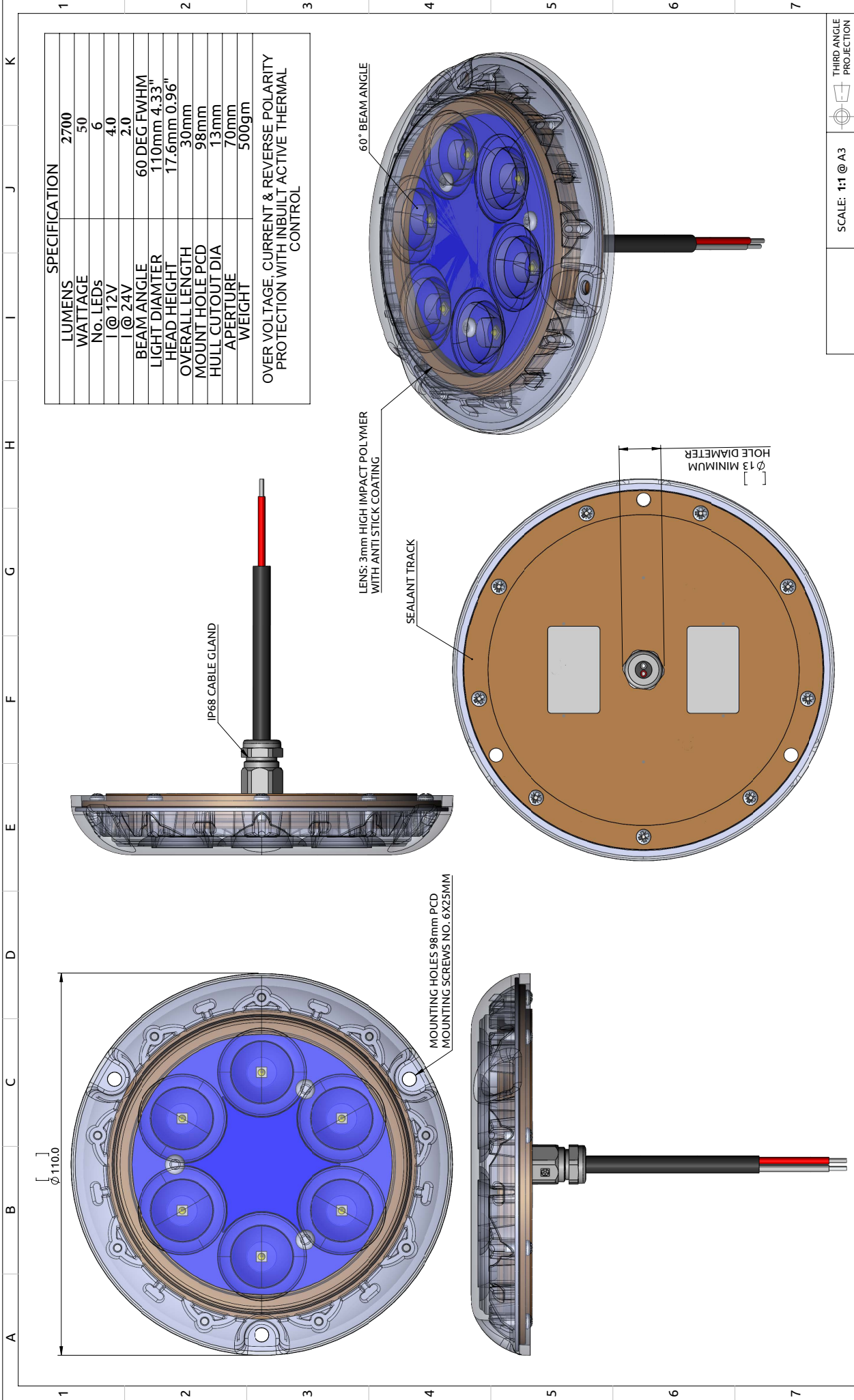
- RINA Type approval
- 2-Year Warranty

SPECIFICATION	PIRANHA P6 CC MK1 1 COLOUR CHANGE
Mounting Type	Surface
Hole cut out size	15mm
Maximum Lamp Lumens	6000
Fixture Lumens	2700
Max Wattage	50 watts
Typical Life Expectancy	50,000 Hours
Voltage	12v/24v Multi-voltage
Power Draw	4 amps @ 12v / 2 amps @ 24v
Protection	Over / Under Voltage, Over Current, Reverse Polarity protection, Active thermal protection. Hydro block technology.
Fixture Profile	17.6mm
Fixture Diameter	110mm
Lens Type	3mm Optical grade high impact polymer, Guard X Coating
Fixture Material	AB2 Bronze (standard) or Marine grade aluminium
Beam Angle	60 Degree
Warranty	2 Year
Type Approval	RINA IEC 60529
Available Colours	Full RGBW Colour change, Toggle switch operation, colour scroll on startup, PTT Technology ensures continuous synchronisation of all the lights
Suitable Use	Above & below the water-line
Spacing	1.2 - 2mtr
Driver Type	Integral
Total weight	500 gm
Attached cable length	1.8 mtr Over-moulded
Included in box	In-line fuse holder & rated fuse, Gel connector, Inline Crimps, Heat shrink, Fixing Screws, Template and installation instructions
ACCESSORIES	(OPTIONAL)
Junction Box	4 Way IP68 Wiring Junction Box
BL-Switch	Panel mount illuminated switch & wiring loom
220/110v Power Supply	Power supply 24v for up to 5 lights
I.Y.S Lighting Control	Control via MFD screen or mobile device



All Piranha models now available in aluminium finish to suit aluminium/composite hulls

vA4-011620



SPECIFICATION	
LUMENS	2700
WATTAGE	50
No. LEDs	6
I @ 12V	4.0
I @ 24V	2.0
BEAM ANGLE	60 DEG FWHM
LIGHT DIAMETER	110mm 4.33"
HEAD HEIGHT	17.6mm 0.96"
OVERALL LENGTH	30mm
MOUNT HOLE PCD	98mm
HULL CUTOUT DIA	13mm
APERTURE	70mm
WEIGHT	500gm
OVER VOLTAGE, CURRENT & REVERSE POLARITY PROTECTION WITH INBUILT ACTIVE THERMAL CONTROL	

DESCRIPTION: PIRANHA P6CC		SCALE: 1:1 @ A3	THIRD ANGLE PROJECTION
MATERIAL: MARINE AB2 BRONZE & POLYMER LENS			
FINISH: SEE PART DRAWINGS			
DRAWING No:	ISSUE: B00 A	REV:	STATUS: RELEASED
GAA-0128 Iss B00A			
PPN:			

Bluefin LED
Underwater Lighting

THIS DRAWING IS THE PROPERTY OF BLUEFIN LED. IT IS TO BE USED ONLY FOR THE PROJECT AND PART AND MUST NOT BE REPRODUCED OR DISCLOSED WITHOUT THE WRITTEN AUTHORIZATION OF BLUEFIN LED. NO DEVIATION FROM THIS DRAWING IS PERMISSIBLE WITHOUT WRITTEN AUTHORIZATION FROM BLUEFIN LED.