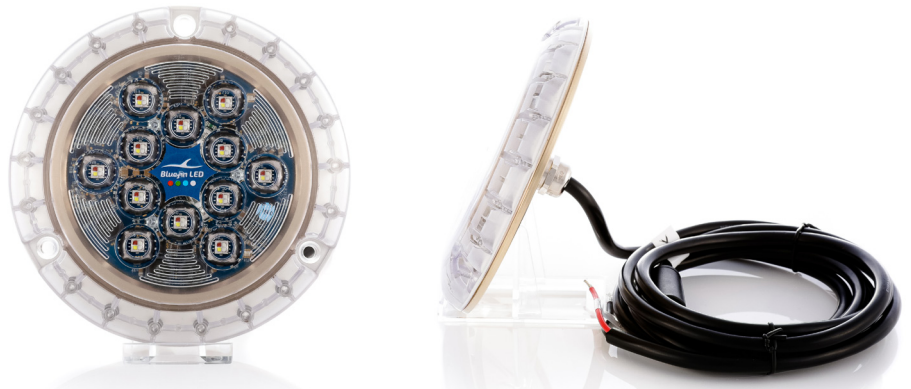


PIRANHA P24 CC | SURFACE MOUNT

PIRANHA
 — SERIES —



With a class leading 7000 Fixture Lumens the P24CC is packed with features usually reserved for models costing two to three times more.

Almost infinite colour combinations available.

Lights are controlled via a simple on/off toggle switch to select and stay on the desired colour or strobe (flashing) mode or via our I.Y.S Control system for MFD/ Mobile devices.

Ultra-compact low profile design, suitable for transom and side mounting on all hull types. Simple installation just one small cable entry hole and 3 mounting screws.

Built in driver technology with active thermal rollback.

Multiple sealing technology with new gas tight cable.

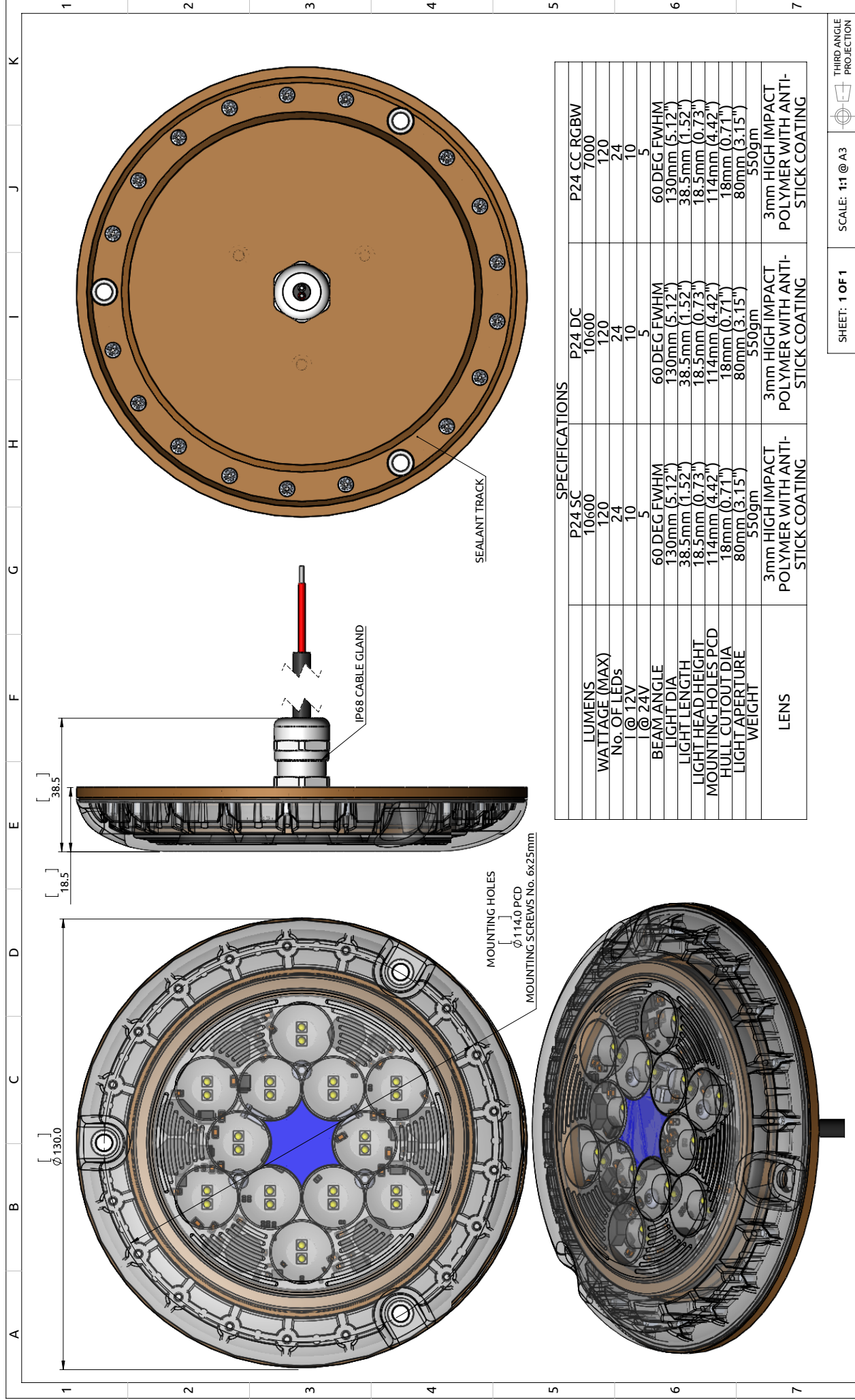
Suitable for in and out of water use.

- RINA Type approval
- 2-Year Warranty

SPECIFICATION	PIRANHA P24 CC COLOUR CHANGE
Mounting Type	Surface
Hole cut out size	18mm
Maximum Lamp Lumens	9000
Fixture Lumens	7000
Max Wattage	120
Typical Life Expectancy	50,000 Hours
Voltage	12 / 24v Multi-voltage
Power Draw	10 amps @ 12v / 5 amps @ 24v
Protection	Over / Under Voltage, Over Current, Reverse Polarity protection, Active thermal protection. Hydro block technology.
Fixture Profile	18.5mm
Fixture Diameter	130mm
Lens Type	3mm Optical grade high impact polymer, Guard X Coating
Fixture Material	AB2 Bronze
Beam Angle	60 Degree FWHM
Warranty	2 Year
Type Approval	RINA IEC 60529
Available Colours	Full RGBW Colour change, Toggle switch operation, colour scroll on startup, PTT Technology ensures continuous synchronisation of all the lights
Suitable Use	Above & below the water-line
Spacing	1.8 - 2.2mtr
Driver Type	Integral
Total weight	550 gm
Attached cable length	1.8 mtr Over-moulded
Included in box	In-line fuse holder & rated fuse, Gel connector, Inline Crimps, Heat shrink, Fixing Screws, Template and installation instructions
ACCESSORIES	(OPTIONAL)
Junction Box	4 Way IP68 Wiring Junction Box
BL-Switch	Panel mount illuminated switch & wiring loom
220/110v Power Supply	Power supply 24v for up to 5 lights
I.Y.S Lighting Control	Control via MFD screen or mobile device



All Piranha models now available in aluminium finish to suit aluminium/composite hulls



SPECIFICATIONS		P24 SC	P24 DC	P24 CC RGBW
LUMENS		10600	10600	7000
WATTAGE (MAX)		120	120	120
No. OF LEDs		24	24	24
1 @ 12V		10	10	10
1 @ 24V		5	5	5
BEAM ANGLE		60 DEG FWHM	60 DEG FWHM	60 DEG FWHM
LIGHT DIA		130mm (5.12")	130mm (5.12")	130mm (5.12")
LIGHT LENGTH		38.5mm (1.52")	38.5mm (1.52")	38.5mm (1.52")
LIGHT HEAD HEIGHT		18.5mm (0.73")	18.5mm (0.73")	18.5mm (0.73")
MOUNTING HOLES PCD		114mm (4.42")	114mm (4.42")	114mm (4.42")
HULL CUTOUT DIA		18mm (0.71")	18mm (0.71")	18mm (0.71")
LIGHT APERTURE		80mm (3.15")	80mm (3.15")	80mm (3.15")
WEIGHT		550gm	550gm	550gm
LENS		3mm HIGH IMPACT POLYMER WITH ANTI-STICK COATING	3mm HIGH IMPACT POLYMER WITH ANTI-STICK COATING	3mm HIGH IMPACT POLYMER WITH ANTI-STICK COATING

Bluefin LED
Underwater lighting

THIS DRAWING IS THE PROPERTY OF BLUEFIN LED. IT IS TO BE USED ONLY FOR THE PROJECT AND PART AND MUST NOT BE REPRODUCED OR DISCLOSED WITHOUT THE WRITTEN AUTHORIZATION OF BLUEFIN LED. NO DEVIATION FROM THIS DRAWING IS PERMISSIBLE WITHOUT WRITTEN AUTHORIZATION FROM BLUEFIN LED.

DESCRIPTION: **P24 SERIES HIGH POWER SURFACE MOUNT LIGHT**

MATERIAL: MARINE AB2 BRONZE & POLYMER LENS

FINISH: SEE PART DRAWINGS

DRAWING No: **GAA-0142 Iss A00A** | ISSUE: **A00** | REV: **B** | STATUS:

SHEET: 1 OF 1 | SCALE: 1:1 @ A3 | THIRD ANGLE PROJECTION