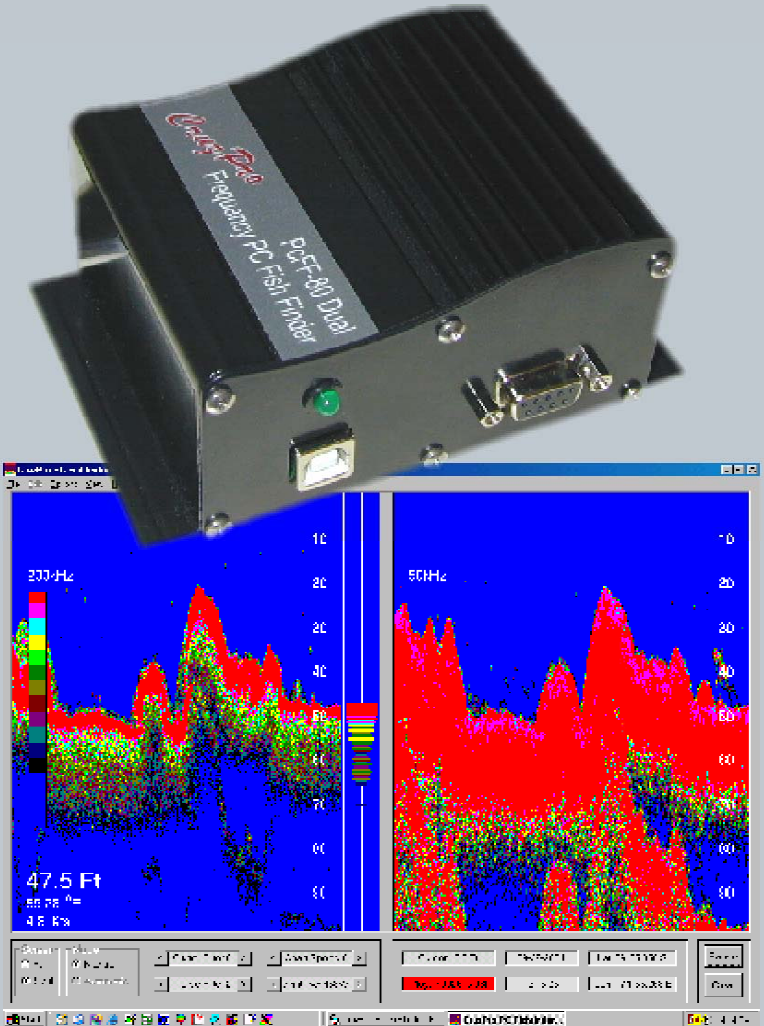


CruzPro PC Sonar/ Fishfinder

for Win98, WinXp, Win2000 & Vista



PcFF80 User's Manual

Updates of this manual will be periodically placed on the CruzPro website at the location:

www.cruzpro.com/pcffman.pdf

Corrections, suggestions for improvements and additions are welcome.

Table of Contents

Introduction	7
Warning	7
Specifications	8
System Requirements	8
Features	9
Installation	10
Mounting and Wiring	10
Transducer Installation	11
Software Installation	14
USB Driver Installation	15
Regional Options	20
Connecting a GPS	20
Operation	21
Initial Installation	21
Operator's Console	23
Right Click Screen Settings	23
Right Click on the Color Bars	24
Drop-Down Menus	26
File Menu	26
New	26
Open Settings	26
Save Settings	26
Save Setting As	26
Exit	26
Options Menu	27
Depth	27
Alarms	27
Temperature	27

Background Color27
Auto Settings27
Serial Data ON/OFF27
Record Screen Data to File27
Playback Screen Data From File27
Communications Ports27
View Menu28
Color Bars28
White Line28
Gray Line28
Depth28
Water Temperature28
GPS Speed Over Ground28
Range Gate28
Help Menu28
Console Settings and Their Effects	29
Full/Split Screen	29
Manual/Auto Mode	29
Sound ON/OFF	30
Clutter Filter	30
Console Settings and Their Effects (Continued)	
Noise Filter	31
Chart Speed	31
Transmitter Power	31
Display Threshold	32
AScope Threshold	32
Cursor Position	33
Mode	33
Date and Time	34
Latitude and Longitude	34
Pause and Clear	34
Screen Settings and Their Effects	35
Frequency	35
A-Scope	36

Signal Processing Type	36
Depth Range	37
Depth Offset and Zoom	38
Import data From / Export Data To.	38
Manual Settings.	38
Transmit Pulse Width.	38
Fixed Analog Gain.	38
Analog Time-Varying Gain.	39
Digital Processor Type 1 and Type 2.	39
NMEA 0183 Output	40
Hints and Suggestions for Settings	41
Other CruzPro Products	44

Windows, Win98, WinXP, Win2K, Win2000 are trademarks of Microsoft, Inc.

Introduction

The PcFF80 PC Fishfinder consists of a “black box” interface, transducer and software that turns your PC into a full-featured high resolution color fishfinder running under the popular Microsoft Win98, WinXP, Win2000 and Vista operating systems. Unlike other “boxed” fishfinders, the PcFF80 will not go obsolete because the software can be updated via the internet.

The PcFF80 is a 50/200Khz color fishfinder with sea water temperature and full/split screen capability that works in both standard analog mode and DSP (Digital Signal Processing) modes to extend the sensitivity and depth range. The standard package is supplied with a low-profile plastic thru-hull transducer. Two different bronze thru-hull and a plastic transom mount transducer options are available. The PcFF80 comes with both RS232 and USB communication interfaces (cables not supplied).

The PcFF80 will display your current latitude, longitude and speed over the ground if a GPS is connected to your PC. All displayed data can be saved to logfiles for later playback.

The PcFF80 software is easy to learn and uses an intuitive Windows interface with drop down menus and mouse control. All settings and control values such as transmit power, pulse width, depth/temperature units, zoom modes, etc. can be saved to named setup files for immediate future use. With a few clicks of the mouse you can recall your favorite settings for different areas or create entirely new settings.

Warning

Sonar pulses are affected by numerous naturally occurring phenomenon such as currents, thermal layers, double and triple bounce, turbulence and varying bottom conditions. While we make every attempt to try to insure that the digital depth number displayed on the screen is correct you should use this number only as one navigational input and not rely totally on the displayed number. The settings you use for transmit power, gain, etc. all affect the reliability of the displayed depth value and you should use other navigational aids such as charts and GPS position to insure that you navigate your vessel safely.

Specifications

Operating Voltage:	9.5 to 16.0 VDC, 0.05 amps nominal, 4.7 amps peak at max power
Indicator:	Front panel LED for Power ON/Off and communications indicator.
Output Power:	2560 watts peak-to-peak (320W RMS). 24KW DSP processed power (3200 WRMS)
Depth Capability:	1000 feet or more at 200kHz 1500 Feet or more at 50kHz
Operating temperature:	0 to 50 deg Celsius (32 to 122 deg Fahrenheit).
Interface Box:	100 x 80 x 50 mm (4 x 3.2 x 2 inch). Powder Coated Aluminum Extrusion
Interface:	RS-232, 115 KBaud, serial data and USB
Transducer:	Dual Frequency 50/200kHz, Depth/Temperature

System Requirements

- ▲ WIN98 SE, 2000, XP and Vista
- ▲ 500 Mhz Pentium PC (or better)
- ▲ Serial Port (16550 compatible UART) and/or USB port
- ▲ 128MB RAM
- ▲ 50MB Hard Drive space
- ▲ SVGA Graphics (1024 x 768 resolution)
- ▲ Mouse / Keyboard

Features

- ▲ High resolution Color FishFinder
- ▲ 200kHz, 50Khz and water temperature
- ▲ GPS Latitude, Longitude and Ground Speed display
- ▲ Auto and Manual controls for depth, gain, transmit power, etc.
- ▲ Full or Split screen
- ▲ Six different depth ZOOM settings
- ▲ Record/Playback to/from log files
- ▲ A-Scope (analog return signal strength)
- ▲ Gray Line
- ▲ White Line
- ▲ STD (standard display)
- ▲ STD/BTM (standard bottom lock)
- ▲ Six Depth Ranges
- ▲ Six Depth Offsets (shifts)
- ▲ Manual & Auto Depth Shift
- ▲ 8 Selectable Chart Speeds
- ▲ 10 Selectable Noise filter settings
- ▲ 8 Selectable Clutter settings
- ▲ 5 Selectable Intensity Color pallets
- ▲ 5 Selectable background colors
- ▲ Feet, Meter, Fathoms selection
- ▲ Degrees F and Degrees C Temperature selection
- ▲ Simple On-screen Temperature calibration
- ▲ "Speed-of-Sound" adjustment for salt/fresh water & user defined
- ▲ Deep and Shallow water alarms
- ▲ Four types of Intelligent Fish alarms
- ▲ Anchor Drag alarm
- ▲ Both RS-232 Serial and USB communications interface built-in
- ▲ Adjustable Transmitter power and Adjustable Receiver Gain
- ▲ Digital Cursor Readouts (Full and Split screens)
- ▲ Analog and DSP (Digital Signal Processing) control
- ▲ Depth Dependent Gain control
- ▲ DEMO (Playback) Mode
- ▲ Built-in thermal shut-down protection
- ▲ Built-in self test functions
- ▲ Built-in POWER/communication activity LED
- ▲ Upgradeable software (via internet)

Installation

Mounting and Wiring

The Interface Box (“black box”) should be located in a dry area in where the temperature does not exceed 50 deg C (120 deg F). The length of the cable between the Interface Box and the PC should not exceed 2M (6 feet) in length. You have an option of connecting the Interface Box to your PC with either a RS232 cable connected to a DB-9 nine-pin COM port or a standard USB port.

The transducer comes supplied with a 6 pin Conexal female connector that plugs into the 6 pin male Conexal connector on the Interface Box. Two power leads (red and black) are also wired into the female transducer connector and are used to power the Interface Box from a suitable +12VDC power source as shown in Figure 1. The power source should be able to supply the maximum current of 4.7 amps peak required during high power

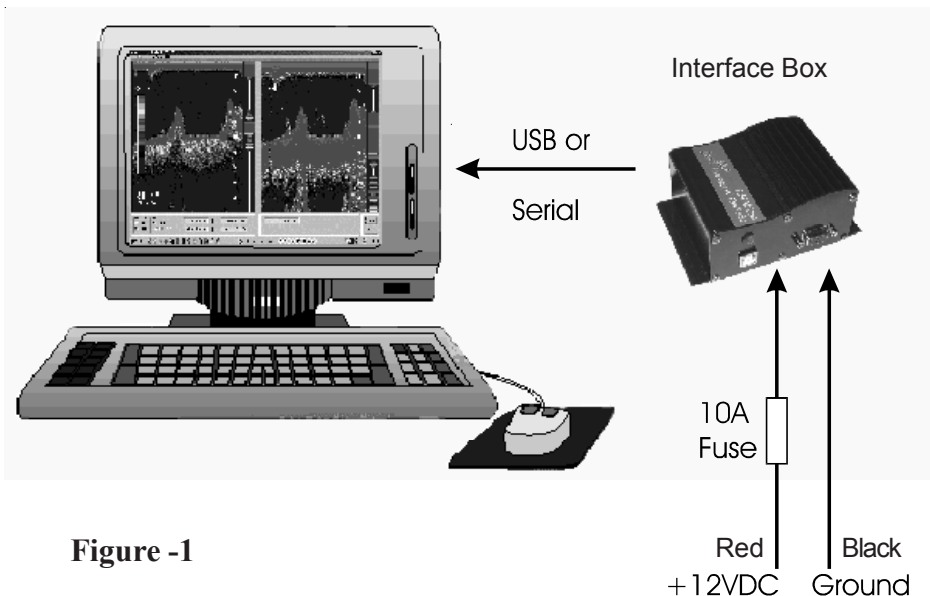


Figure -1

pulses. For protection, a 10 amp fuse should be connected in series with the red +12V power lead. The wires supplying power to the Interface Box should be heavy enough to carry 5 amps without dropping more than one or two tenths of a volt. This will depend on the length of the wires and Figure 2 will help guide you.

Figure 2 - Length From Interface Box to Power Supply

3	8	10	15	Meters
10	26	33	49	Feet
16	16	14	12	Gauge

Keep the Interface Box away from radios, radars, other electrical wires, TV's and antennas as much as possible to help prevent interference.

Transducer Installation

Plastic housings are recommended for fiberglass or metal hulls. Never install a plastic Thru-Hull housing into a wooden boat hull. The swelling of the wood may cause a fracture to occur. Bronze housings are recommended for wood or fiberglass hulls. Never install a bronze housing in a metal hull, because electrolytic corrosion can occur. Stainless steel housings are recommended for metal hulls to prevent electrolytic corrosion from occurring. Never install a metal housing in a hull with a positive ground.

The transducer supplied for use with the PcFF80 is a dual frequency 50/200Khz depth and temperature transducer. The use any other transducer other than that expressly supplied with the PcFF80 will void the warranty and can result in damage to the Interface Box. The transducers contain a crystal element and care should be taken in handling the transducer so as

not to damage the sensitive transducer face. You should not coat the transducer face with antifouling paint. Mounting the transducer inside the boat to “shoot through the hull” will result in less than optimal performance and the use of an adhesive such as epoxy, glue, silicon adhesive or bedding compound will void the transducer warranty.

A low profile plastic thru-hull transducer is supplied as standard with the PcFF80 PC Fishfinder. Two different bronze thru-hull transducers or a transom mount transducer are available as options. The following instructions are for installation of the plastic thru-hull transducer. Please see the separate installation instructions provided with the other transducer options for the correct installation of those units.

The transducer should be located in an area of the boat hull that is free from turbulence caused by thru-hulls, paddle wheels or any other obstructions. It is important that the water flowing by the transducer face be free of air bubbles caused by turbulence. If the hull is not parallel to the water, then a suitable fairing block should be used to insure that the transducer is mounted perpendicular to the sea bottom. On sailboats the transducer should not be located too close to the keel.

In routing the cable to the sounder, avoid placing it near or parallel to other electrical cables, particularly ignition and alternator wiring. Use care when routing the cable through bulkheads and other parts of the vessel to avoid tearing the cable jacket thus exposing it to the harsh environment.

Acoustic noise is another item to take into consideration when determining a location of the transducer. Vessel generated noise from the propellers, shafts and other machinery should be avoided also. After determining the best location from the outside, consider the need for room inside the hull to tighten the mounting nut and the need to route the transducer cable away from other electrical noise generating wires..

Once a location has been determined, and prior to drilling any holes in the hull. Inspect the location from the inside of the hole to ensure that the

location you have chosen will not interfere with any bulkheads, plumbing or any other obstruction.

1. Drill a small hole first from the inside of the hull at the desired location for the transducer. This will be a locating hole for the final drilling.

2. From the outside, enlarge the locating hole to ¼” or whatever size necessary for the pilot drill of the 2” hole saw. Drill the pilot hole vertically, followed by the hole saw.

3. After drilling, remove any rough edges around the hole and thoroughly clean and sand the inside and outside surfaces around the hole.

4. Remove the wing nut from the transducer housing. Apply a generous amount, approximately 1/16” thick, of a good marine adhesive/sealing compound around the lip of the housing that contacts the hull. The compound should also extend up the sidewall of the housing, ¼” higher than the combined thickness of the hull and wing nut. This will ensure there is sealant in the threads to seal the hull and to hold the wing nut securely in place.

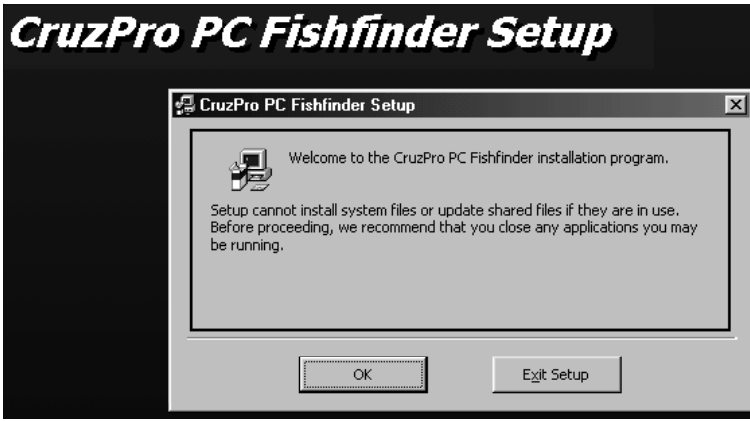
5. From the outside of the hull, insert the transducer housing and gently rotate the housing to squeeze out any excess sealant.

6. From the inside, thread down the wing nut until it makes contact with either the hull or fairing block, if used. The wing nut should then be tightened to a snug fit, hand tighten only. *DO NOT OVERTIGHTEN THE WING NUT.*

Note: For a cored fiberglass hull, thru hull transducer installation should only be performed by a trained technician. Improper sealing of the core material can lead to premature failure or possible water leakage.

Software Installation

Place the distribution CD into your CD/DVD drive and the install program should launch automatically. If it does not, click on “Start”, “Run” and type “D:\setup.exe” (substitute your CD ROM drive letter for “D” if your CD ROM is on another drive than “D”).



Click OK and follow the instructions. Use the defaults unless you have a good reason not to. If the installation was successful, you should see:



If you connect to the PcFF80 Interface Box with a RS232 serial cable and one of your serial COM ports, then you can skip the following USB Driver Installation section and proceed directly to the “Connecting a GPS” section.

USB Driver Installation

If you connect to the PcFF80 Interface Box with a USB cable, then you will need to install and setup the appropriate USB driver software. Leave the distribution CD in the CD ROM drive and plug a USB cable into the Interface Box and your PC USB port. When you turn on the power to the Interface Box, Windows will detect the new hardware and depending on your version of Windows you will see a message similar to:



Click “Next” and “Next” again when you see:



When the “Add New Hardware Wizard” comes up, click “Specify a location”, type “D:\drivers” (substitute your CD ROM drive letter for “D”)



and click “Next”. Depending on your operating system Windows will select a driver from the distribution CD. Click “Next” and the correct driver will be automatically installed.



If the USB driver installation is successful, then you will see the following screen. Click “Finish” to complete the installation of the USB driver.



After the USB driver has been installed, it must be optimized using the Windows “Device Manager” before you can use the new driver. To get into the Windows Device Manager:

In Win98: Click “START”, “Settings”, “Control Panel”, “System”, “Device Manager”.

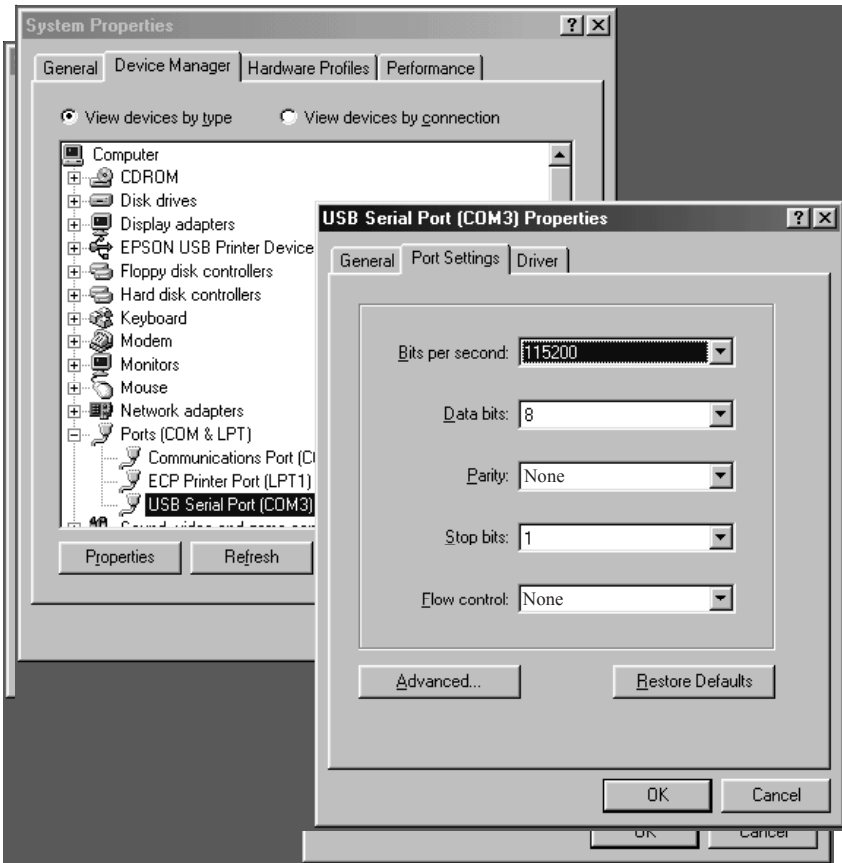
In WinXP: Click “START”, “Settings”, “Control Panel”, “Performance and Maintenance”, “System”, “Hardware”, “Device Manager”.

In Win 2000: Click “START”, “Settings”, “Control Panel”, “System”, “Hardware”, “Device Manager”.

In Vista: Click “START”, “Settings”, “Control Panel”, “System”, “Hardware”, “Device Manager”.

The following screen will be displayed:

Select "View device by type" then click on "Ports (COM and LPT)" and select "USB Serial Port (COMx)". Click the "Properties" button to bring up the USB Serial Port properties page.



Click on "Port Settings", set "Bits per second" to 115200 and set "Flow control" to None. Click the "Advanced" tab to display the next screen:



Set the COM Port Number to the COM port number you want such as 3, 4, 5, 6, 7 or 8 (if they are not being used). Set the following parameters as shown:

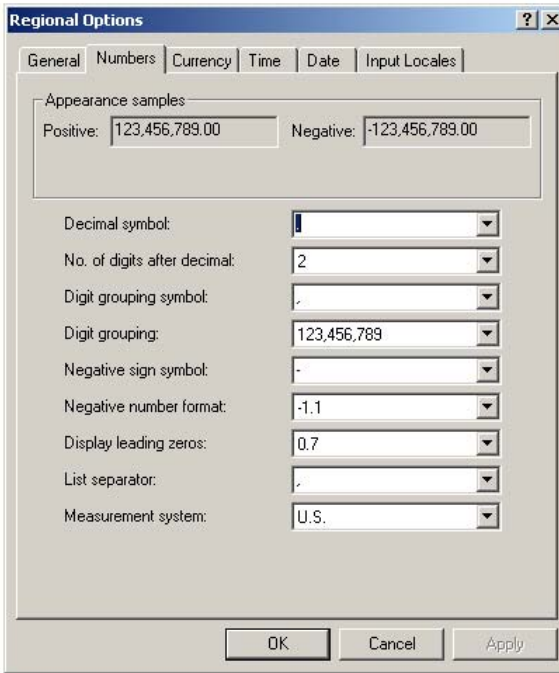
USB Transfer Sizes:	Receive (Bytes) to 64
	Transmit (Bytes) to 64
BM Options	Latency Timer (msec) to 5
Options	Disable PNP - checked.

Click OK until you get to the Device Manager and close it and any other open windows (such as the Control Panel). This completes the USB driver installation and setup.

If using the USB port, be sure to plug the USB connector into the PcFF80 Interface Box and your PC USB port and boot your PC **before** connecting +12V power to the Interface Box. Turn off the power to the Interface Box **before** removing the USB cable.

Regional Options

The PcFF80 Windows software expects to see numbers with a decimal point not a comma. If the Regional Options in Windows is set to use commas for numbers the software will not work. Use Control Panel - Regional Options to set numbers to match the figure below.



Connecting GPS

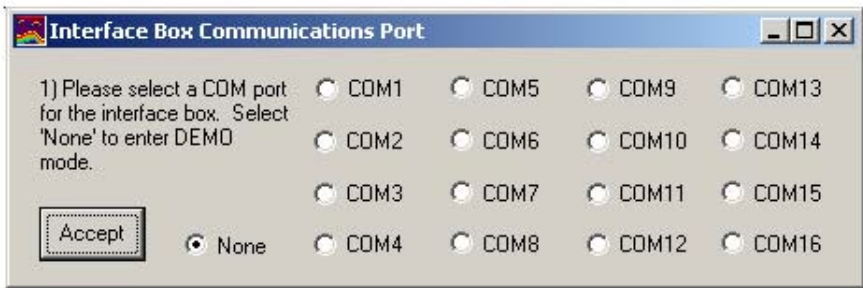
The PcFF80 Windows software will display GPS latitude, longitude and Speed Over the Ground (SOG) if a GPS is connected to your PC on COM1 to COM8. There are numerous ways to connect a GPS to your PC and you should follow the GPS manufacturer's instructions. The "Initial Installation" section of this user's manual will show you how to select the GPS port. This port can be changed or disabled at any time with a few clicks of the mouse from the PcFF80 Windows software.

Operation

Initial Installation

You will probably want to place a desktop icon for the PcFF80 PC Fishfinder software on your desktop for easy access to the program. Click the “Start”, “Programs” buttons and use the mouse to navigate to the “CruzPro PC Fishfinder” program listing. Right click on the words “CruzPro PC Fishfinder” and select “Copy” from the drop down menu. Right click on an empty part of your desktop and paste a shortcut to the CruzPro PC Fishfinder onto your desktop. Double click the icon to launch the PC Fishfinder program.

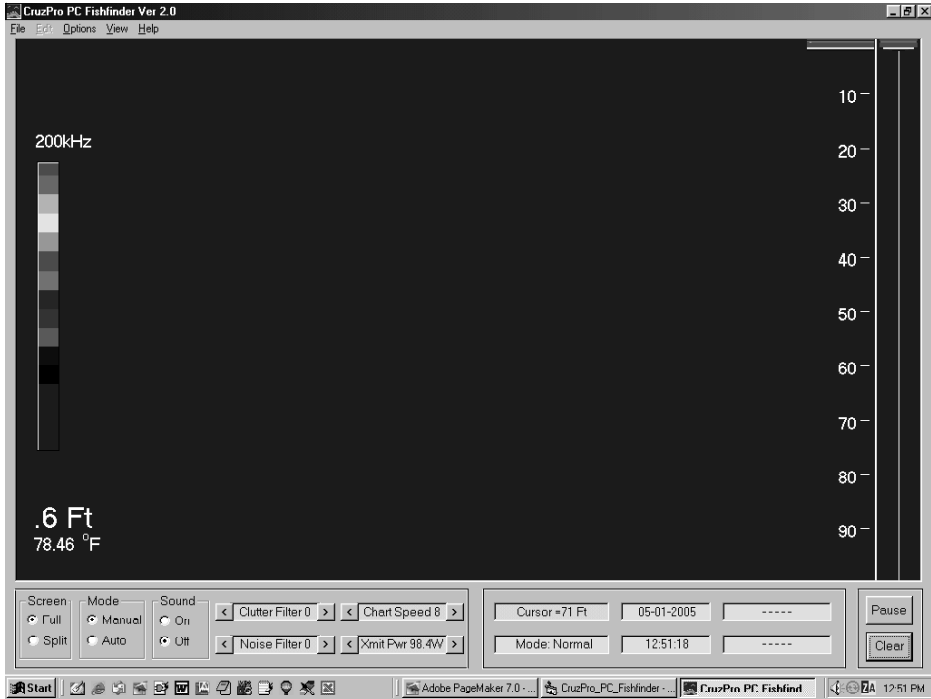
The first time you start the program it will display the Interface Box Communications Port selection menu:



Be sure that the Interface Box is attached to your PC and that +12VDC power has been turned on. Select the COM port where the Interface Box is attached and click on “Accept”. If you do not have an Interface Box attached (to run the software in demo mode and/or to playback some pre-recorded files), select “None” and click on the “Accept” box.

The program will then ask for a (optional) GPS COM input port and a serial COM port to use to output NMEA data of the depth, water temperature and GPS data (see NMEA Output Sentences in this user’s manual). Select “None” if these are not going to be used at this time.

The program will communicate with the Interface Box on the COM port you specify and the following default screen is displayed:



Operator's Console

The main Operator's Console (shown on the last Page) allows for immediate control of a number of important functions with a click or two of the mouse:

- ◆ Pause/Run the fishfinder hardware
- ◆ Clear the display screen of all previous data
- ◆ Select Full or Split screen operation
- ◆ Select Automatic or Manual operation mode
- ◆ Enable or Disable the alarm sound (On/Off)
- ◆ Select the desired level of Surface Clutter filtering
- ◆ Select the desired value of Noise Filtering
- ◆ Adjust the Chart Speed
- ◆ Adjust the transmitter Power
- ◆ Access a number of Drop-Down menus

Additionally you can right-click in the data display area to bring up further menu screens or right click on the Color Bar to access other color schemes for the data. In order - this user's manual will first discuss the data screen right-click options, the right click Color Bars options and then the drop-down menu items in turn.

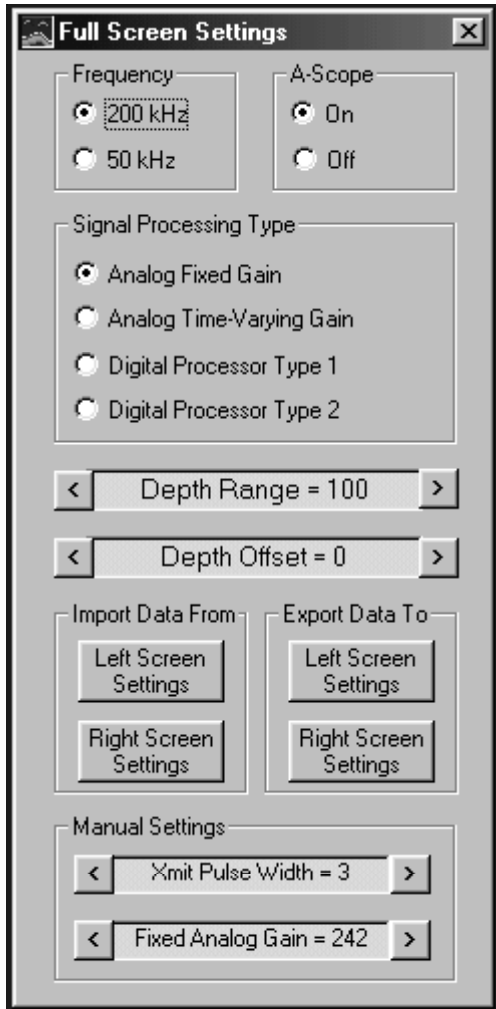
Right Click Screen Settings

If you right-click the mouse button with the mouse positioned in the data area of the display screen a "Screen Settings" menu will appear. Clicking on the "Full" screen will bring up the "Full Screen Settings" menu. If the display is in split screen mode, then right-clicking the mouse when the mouse pointer is located in the right-hand of the split screen will result in the "Right Screen Settings" menu being displayed. Right-clicking the mouse when the mouse cursor is on the left side of the split screen display will result in the "Left Screen Settings" menu being shown.

The three screen menus are very similar except control only those features of their respective Full, Left or Right screens. Changing a control with the Right Screen Settings menu will not affect the Left Screen Setting or Full Screen Setting values.

The Screen Settings menu will stay on top of the data screen until you close it or click elsewhere outside of the Screen Settings menu box.

The Screen Settings menu lets you change many of the operations of the PC Fishfinder Interface Box. You can change the operating frequency, type of signal processing used by the Interface Box, zoom to a range of interest by changing the range and depth offset of the displayed data and control the transmitter pulse width and receiver gain.



Any changes made with on the Screen Settings menu affect only the screen being adjusted - not the other screens. This provide for total flexibility in that different settings can be programmed for each screen. For example, you can program the Interface Box to use different transmitter pulse widths for the Full, Left and Right display screens.

There is an option to export all of the setting from one display screen to another display screen. If you like the way the right hand side of the split

screen display looks and want the Full screen to have the same settings, you can export all the Display Settings from the Right Screen to the full screen with a click of the mouse. You can also import all the Screen Settings from another screen to the current screen the same way.

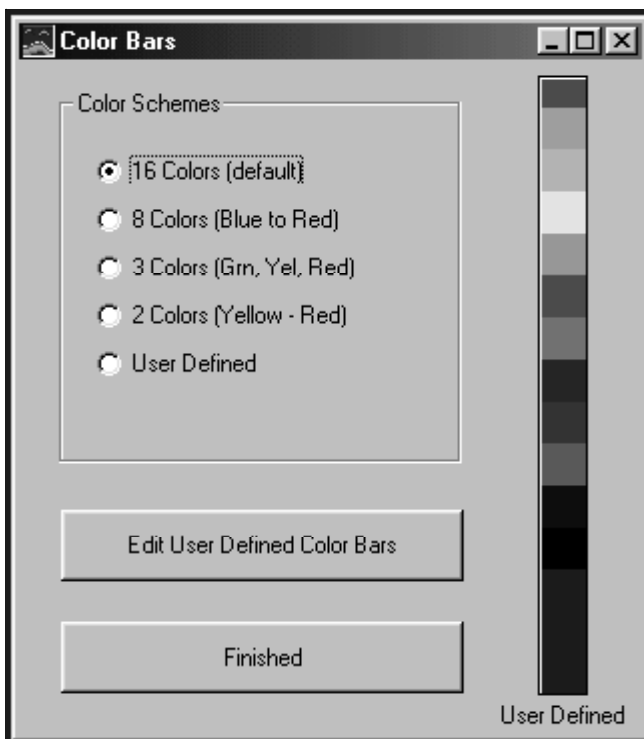
The individual setting of the Screen Settings menu and their meanings and effects are explained in the “Screen Settings and Their Effects” sections of this manual.

Right Click on the Color Bars

When you right click on the color bars, the Color Bars selection and editing menu appears. You can select from four different predefined color schemes to represent the received signal strength or define your own. Up to 16 colors can be defined in the User Defined color bar.

The color bar selection and User Defined colors are automatically saved to a setup file when you exit the program, if desired.

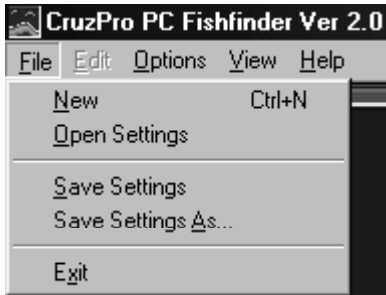
Also see “Display Threshold” for further information about the color bar.



Drop-Down Menus

You can access a number of drop-down menus from the main operator's console by clicking the mouse on the "File", "Options", "View" and "Help" menus at the top-left of the screen.

File Menu



The "New" selection will create a display with all "factory" defaults for the settings.

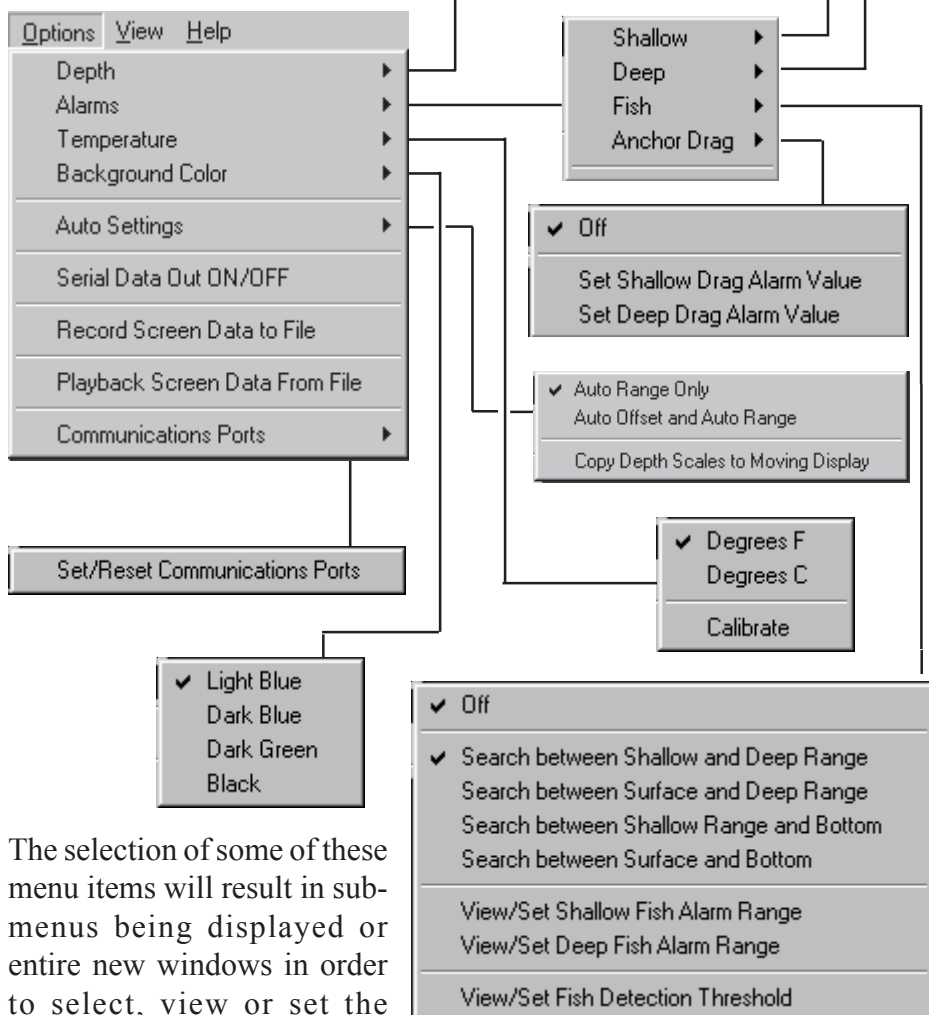
The "Open Settings" selection creates a display with the same settings as saved previously using the "Save Settings As" menu selection.

The "Save Settings" command will save the current settings to a file. This file is automatically loaded the next time the program starts. The "Save Settings" and the "Save Settings As" commands save all the current settings for all three display screens (Full, Left and Right) and all the current Operator Console settings such as transmit power, noise filter settings, alarm values, units of measure, color bars, etc. The "Save Settings" and "Save Settings As" commands are not the same as the "factory default" settings which is selected only with the "New" command.

The "Save Settings As" command is used to save the current settings with a name you want to give the current settings. With this command you can create a library of favorite screen settings for each area you visit, then recall those setting at any time by using the "Open Settings" command. In deep water you might want to have settings that use higher power, a wider transmitter pulse width using 50Khz and display data with a deeper Depth Range than the settings used in shallow water. You can save the deep water settings with a name called "Deep" and have a settings file called "Shallow" for shallow water and another called "Marina" to set up the PC Fishfinder especially for entering or leaving your marina.

Options Menu

The Options Menu items are used to select Units Of Measure, Set Alarms, select screen colors and turn ON or OFF features such as recording or playing of data log files.



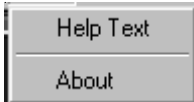
The selection of some of these menu items will result in sub-menus being displayed or entire new windows in order to select, view or set the desired values.

View Menu

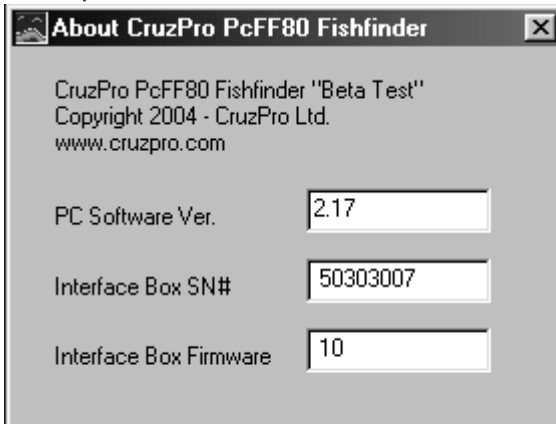


The View Menu is used to select what you want to see displayed on the Operator's Console. Items can be individually turned ON or OFF with the click of the mouse.

Help Menu



The Help menu is used to display some help text and details about the PC Fishfinder program and Interface Box. If you find it necessary to email for help, please include the details from the "About" box as well as your system and Windows software version being used.



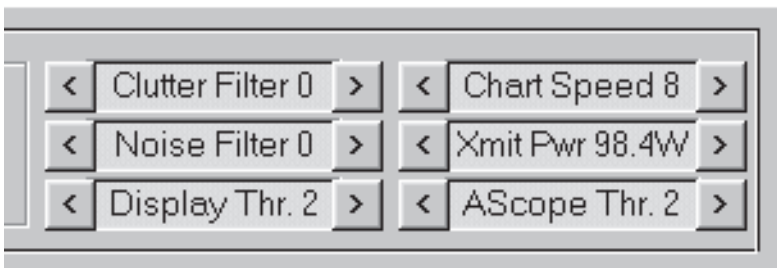
Console Settings and Their Effects

This section discusses some of the various PC Fishfinder Operator's Console settings, their options and some of the effects they have on the operation of the PC Fishfinder.

Full/Split Screen

Selecting Full Screen results in the entire display width being used to display data from a single frequency - either 200kHz or 50Khz. Selecting Split Screen causes the display screen to be split in two halves - the Left Screen and the Right Screen. In split screen mode you have complete control over how each of the two screens displays data. You can display data for the same frequency (200kHz or 50Khz) in two different ways or display data for both the 50Khz and 200Khz frequencies simultaneously. There are three separate sets of screen settings: "Full Screen Settings", "Left Screen Settings" and "Right Screen Settings". For more details, see the "Screen Settings and Their Effects" section of this manual.

Manual/Auto Mode



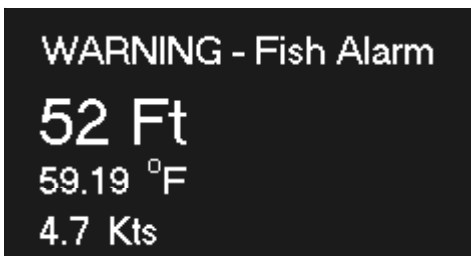
Selecting Manual Mode puts the PC Fishfinder into a mode where you can control each of the parameters such as Transmitter Power or Receiver Gain and Depth Range manually. This gives you complete control and flexibility of how the PC Fishfinder operates. In Auto Mode the PC Fishfinder will attempt to set the transmitter power, depth range, receiver gain and transmitter pulse width automatically.

As the depth of the bottom varies the PC Fishfinder will automatically change the Depth Range to keep the bottom return on the display and adjust the power settings for the best picture.

Sometimes the settings that produce the best picture of the bottom will not be the settings that result in the best display of fish in more shallow water and you will want to control the settings yourself in manual mode.

Sound ON/OFF

You can enable and disable the alarm sounds for the Shallow, Deep, Fish and Anchor Drag alarms all at one time by turning off the sound with the Sound ON/OFF feature. This prevents you from having to turn off each alarm separately using the Options pull down menu multiple times. Even with the sound turned OFF the alarm warnings will still be flashed visually on the left side of the display screen just above the digital depth number (but only if the individual alarms are enabled with the Options menu).



Clutter Filter

Bubbles and other debris as well as turbulence created by boat wakes and strong currents near the surface will create strong sonar returns often referred to as “Surface Clutter”. The effects of surface clutter can be distracting. The Clutter Filter is used to reduce or eliminate the effects of surface clutter. The higher the setting, the less surface clutter will

show up on the display screen. The surface clutter filter will not change, reduce or eliminate the signals from the bottom, noise or from fish (unless the fish is located very close to - or in the surface clutter).

Noise Filter

Small bubbles deeper in the water, acoustic noise due to engine vibrations, “transducer slap” at high boat speeds and other electrical noise can create real or “ghost” signals that can often be reduced or eliminated altogether by using the Noise Filter. The higher the setting, the more effective the filtering is. Warning - too high a setting can affect the returns from fish.

Chart Speed

The rate at which the screen is updated with new information can be controlled with the Chart Speed setting. The higher the setting, the faster the data scrolls across the screen. In deep water the maximum chart speed will be reduced automatically because it takes a minimum amount of time for the sonar pulse to reach the bottom and return back to the depth transducer. For example, at a bottom depth of 1000 feet it takes about 1/2 second for the sonar pulse to travel to the bottom and back up to the transducer so if you set the depth range at 1000 feet the maximum chart speed is about two updates per second.

Transmitter Power

The PcFF80 PC Fishfinder contains a dual frequency sonar transmitter whose output strength can be controlled by software in 256 steps to output a signal from 0 watts to 2560 watts peak-to-peak (320 watts RMS). In manual mode the Transmitter Power selection is used to set the transmitter power. More power allows you to go deeper and see smaller fish better. Using too much power can cause the depth algorithm to become confused, however, so be forewarned that the digital number at the bottom left hand

side of the display can be wrong if too much (or too little) power is used. The usual rule of thumb is to increase the power level and/or receiver gain until you can just start to see a “double bounce”.

A double bounce is where you see a second return from the bottom at twice the actual depth. This is due to the sonar signal traveling back to the surface and being reflected again back to the bottom and back to the depth transducer a second time. In shallow water with hard bottoms having good reflectivity it is often possible to see second, third and even fourth bounces if too much power is used.

Display Threshold

The Color Bar is divided into 16 parts. The lower part has the value of 1 and the top part has the value of 16. The acoustic signal is digitized to a value from 1 to 16. When a screen pixel representing an acoustic signal is painted onto the display screen it is painted in the color representing the signal strength. A very weak signal might be painted in dark blue, a stronger signal in green and a very strong signal in red. There are a number of predefined color bars and you can also create your own color bar with colors of your choice.

The Display Threshold slider determines whether a signal response gets drawn on the display screen or is ignored. If the strength of the signal is greater than the display threshold it is painted on the display screen in the color determined by the Color Bar. If the signal of that particular pixel of data is weaker than the Display Threshold then that pixel is ignored and not drawn on the display screen.

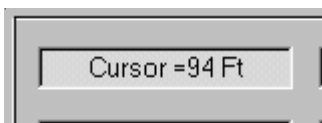
AScope Threshold

TheAScopeThreshold slider determines whether a signal response gets drawn in the AScope area of the screen (if the AScope is turned ON) or

is ignored. If the strength of the signal is greater than the AScope threshold it is painted in the AScope area in the color determined by the Color Bar. If the signal of that particular pixel of data is weaker than the AScope Threshold then that pixel is ignored and not drawn on the AScope.

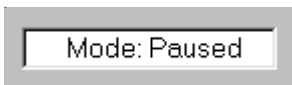
Cursor Position

Whenever the mouse cursor is located on the data display area, the depth of the cursor is displayed in the Cursor box near the right-bottom of the screen. In split screen mode, the correct depth is displayed in the Cursor box even if the two sides of the split screen have different depth ranges and depth offsets (zoomed to different depth scales).



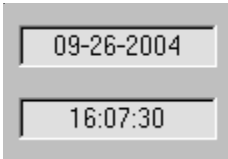
Mode

The Mode display shows what the PC Fishfinder display is showing at the moment. The possible options are “Paused”, “Play” and “Normal”.



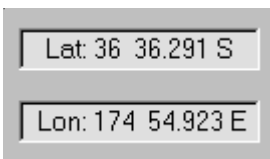
Date and Time

The current Date and Time (of the computer clock) will be displayed in these two boxes unless you are playing back a prerecorded log file, in which case the Date and Time the data was recorded to file will be displayed instead.



Latitude and Longitude

If a GPS is connected and a valid position fix is available to the PC Fishfinder, then the current Latitude and Longitude will be displayed in these two boxes unless you are playing back a prerecorded log file. If you are playing back a prerecorded logfile then the Latitude and Longitude of the recorded data will be displayed instead.



Pause and Clear

You can click on the “Pause” box to stop the PC Fishfinder from updating the display screen (freeze the display) in either run mode or playback mode. Clicking on the “Clear” box will clear all the signal return data from the display.

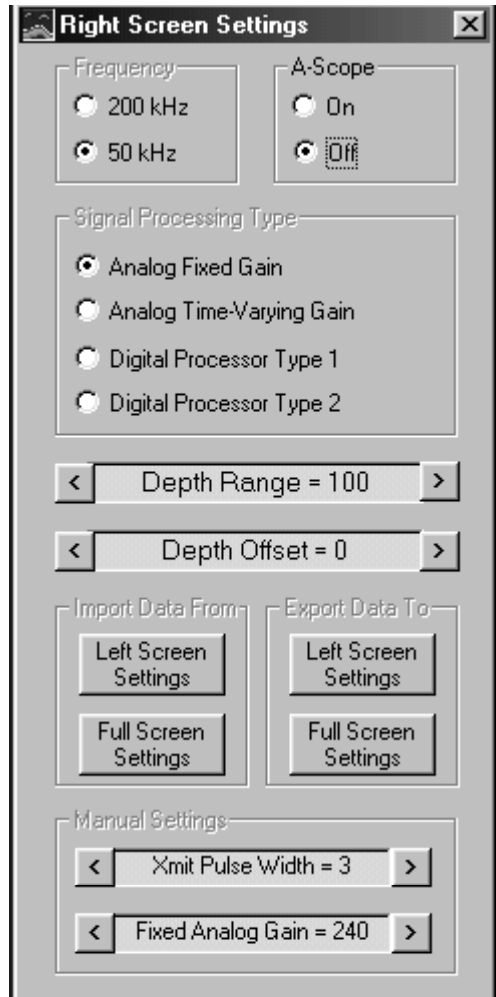
Screen Settings and Their Effects

When you right click the mouse while the mouse cursor is located on the data display area, the “Full Screen Settings”, “Left Screen Settings” or “Right Screen Settings” menu is displayed, depending on where you click and whether the screen is in full or split mode.

Frequency

You can select 200 or 50 KHz. The use of 200kHz will provide you a more detailed display of the sonar information and will show smaller bait fish than can be detected by using 50kHz.

The selection of 50kHz will show data for a larger area because the beam pattern of the 50Khz signal is much wider (45 degrees) than the beam pattern of the 200 KHz transducer (11 degrees). 50 KHz is attenuated less by water, however, and will allow you to see deeper than you can using 200KHz. A fish has to be bigger to show up at a frequency of 50khz. Often professional fishermen will use 200 KHz on one side of the display and simultaneously display the results of the 50KHz sonar signal on the other side of the display.



A-Scope

Whereas the sonar display screen shows a time history of the sonar signal, the “A-Scope” region shows the instantaneous amplitude (strength) of the sonar signal currently under the depth transducer. You can turn on an A-Scope region for the “Full”, “Left” and/or “Right” hand side of the display screen using the “A-Scope” control.

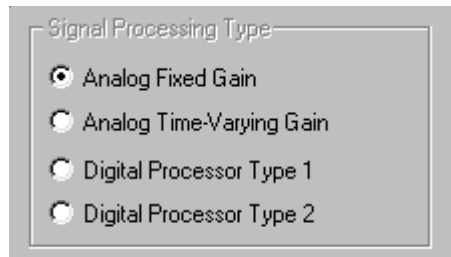
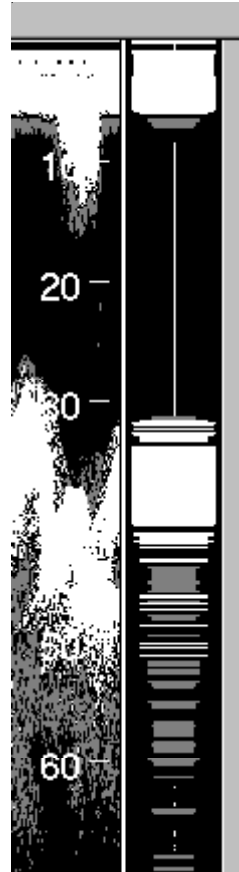
The color and width of the display in the A-Scope area show the depth and strength of the signal under the transducer. The wider the line in the A-Scope the stronger the signal.

Signal Processing Type

You can select from four different methods to process the returned sonar signal. Each method has its advantages and disadvantages.

“Analog Fixed Gain” is the easiest to understand and means that the receiver gain is fixed at one value for the entire time that the return signal is processed and painted on the display screen.

Analog Time-Varying Gain means that the receiver gain is varied as a function of time so that signals being received from deeper objects (coming back at a later time) are given more weighting. Since deeper objects usually return a weaker signal the extra gain will cause deeper fish to appear bigger or stronger. By carefully selecting the Time Varying Gain values you can make a 18 inch



fish appear to have the same strength (color) irregardless of the depth.

When you select Analog Time-Varying Gain you will be asked to provide two different gain values - the start gain (gain at the surface) and the rate of change of the gain (how fast you want the signal gain to increase). Selecting these two values is a function of trial and error until you find settings that work for your particular situation. Remember, once you find settings that work well for you, you can save those settings with a name and load them back any time.

Digital signal processing (DSP) enables the PC Fishfinder to go deeper and see smaller objects (fish) without increasing the power normally required to do so. The penalty you pay for using DSP is that the resolution is not as good in shallow water. Use the DSP modes only in deeper water where the analog modes no longer provide a strong enough signal return to work properly.

Each of the two DSP modes Type 1 and Type 2 provide different advantages. Digital Processor Mode 2 offers the highest level of signal improvement but works on a “probability” process which results in the signal strength fading in and out. Digital Processor Mode 1 offers less signal strength improvement but provides for a more constant signal without as much signal fade as Digital Processor Mode 2.

Depth Range

The Depth Range value sets the depth scale from the top of the display to the bottom of the display. A selection of 100 feet will result in a depth range of 100 feet from the top of the display to the bottom of the display. This does not mean that the top of the display will be zero and that the bottom of the display will be 100 feet because the Depth Offset will affect these settings. For example with the Depth Range set to 100 feet and the Depth Offset set to 250 feet the top of the display will be at 250 feet and the bottom of the display will be at 350 feet (a Depth Range of 100 feet).

Depth Offset and Zoom

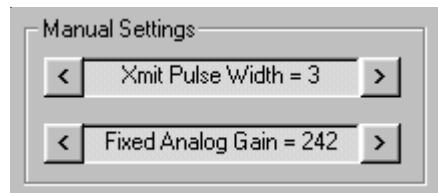
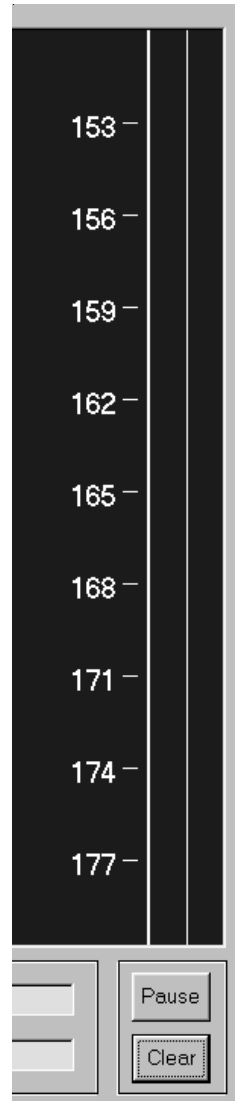
As discussed in the previous section on Depth Range, The Depth Offset is the depth value that you want displayed at the top of the screen. The Depth Offset in conjunction with the Depth Range allow you to “Zoom” the display to any given range. For example, you could show a 30 foot band from 150 to 180 feet by setting the Depth Offset at 150 feet and the Depth Range at 30 feet as shown in the picture on the right.

Import Data From / Export Data To

All the screen settings discussed so far in this section on “Screen Settings and Their Effects” can be copied between the Full, Left and Right screens using the “Import” and “Export” commands. When you Import or Export the settings between screens all the settings for Frequency, A-Scope, Signal Processing Type, Depth Range, Depth Offset, and the other manual settings associated with these values are transferred together at the same time.

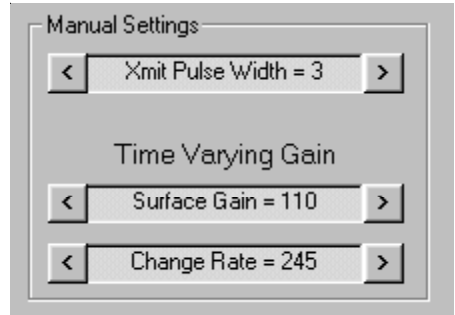
Manual Settings

Each of the four Signal Processing types have associated with them some further values that you can control in manual mode. When you select Analog Fixed Gain you must also supply the Transmit Pulse Width and the Fixed Analog Gain value to use for the transmit pulse and receiver gain. The Transmit Pulse Width sets

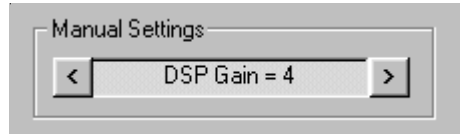


the length of the transmit pulse. A shorter pulse provides more resolution and helps prevent small objects (such as fish) from blurring together but longer pulses will often provide more depth range in deeper water.

In Analog Time-Varying Gain mode you must supply three different values as already mentioned earlier - The Transmit pulse Width, Surface Gain and the gain Change Rate. Basically the Surface Gain is the value of gain to start the receiver with and the Change Rate is a measure of how fast you want the gain to increase as a function of time.



In DSP mode, selecting Digital Processor Type 1 or Digital Processor Type 2 will result in your having to supply only a single DSP Gain value. The Transmit Pulse Width is automatically set by the Interface Box depending on the selected DSP gain value and you have no control over the transmit pulse width. The larger the DSP gain, the more digital processing is applied to the received signal and weaker signals can be recovered from the noisy return signal. The benefit is that you can see objects in deeper water than using analog processing. The higher DSP gains require wider transmit pulses which result in a loss of resolution in more shallow water.



NMEA 0183 Output

The PcFF80 Windows software can be told to turn ON NMEA 0183 serial data output from the “Options” menu <--> Serial Data Out ON/OFF.

When “ON” is selected the PcFF80 will send the depth, sea water temperature and GPS position and ground speed data out to a serial port (or USB port) of your choice.

A sample of the data sent to the output port is shown here:

```
$GPRMC,040113,A,3653.10,S,17437.47,E,000.6,074.4,190903,,*03  
$SDDBT,015.7,f,004.8,M,002.6,F*0D  
$SDDPT,004.8,*75  
$SDMTW,023.8,C*3D
```


Hints and Suggestions for Settings

The transmit power, receiver gain, pulse width, and signal processing type etc. all affect how the display will look and how well the unit functions as both a fish finder and as a depth sounder.

If you are not already familiar with the adjustments we suggest that you start with the following settings and then experiment with the settings to suit your preferences:

- 1) Processing type - Analog Fixed Gain (not DSP or time-varying gain).
- 2) Receiver gain - 240
- 3) Transmit pulse width - 3
- 4) Frequency 200 Khz
- 5) Transmit power - 500 watts
- 6) Noise filter - 4
- 7) Display threshold - 4

Do not switch to automatic mode until the unit has locked onto the bottom.

The settings above should work well between a depth of 3-4M (10 feet) to 50M (150 feet). In deeper water you will want to increase the output power to compensate for the weaker signal levels.

The general rule of thumb for stable depth numbers is to increase the output power and the receiver gain until you just BARELY start to see a double bounce signal (i.e. if you are in 20M of water you will see a double bounce signal at 40M).

When you are happy with the settings for a particular situation (such as when returning to your marina slip) you should save the settings with a easy to remember name such as `Returning_To_Marina_Slip` or `Fishing_Spot_Near_Buoy`. Then with a few clicks you can almost instantly recall the best settings for the location or what you were doing.

There is no limit to how many settings you can save to your hard drive. When hunting for fish you will also want to use higher power but be aware that high power will show fish better but the displayed digital depth number may become unstable if you use too much power/receiver gain. If you are searching for fish in shallow water and not looking deep enough to see the bottom on the display, then the depth numbers will not work at all.

The display and digital depth number can be affected by air bubbles in the water near the surface (called “surface clutter”). Surface clutter can be caused by crossing the wake of another boat, propeller wash caused by reversing or passing near objects such as bridge abutments or pilings when a current is running. There are several ways to help adjust for surface clutter. You can increase the surface clutter rejection setting and/or use time varying gain.

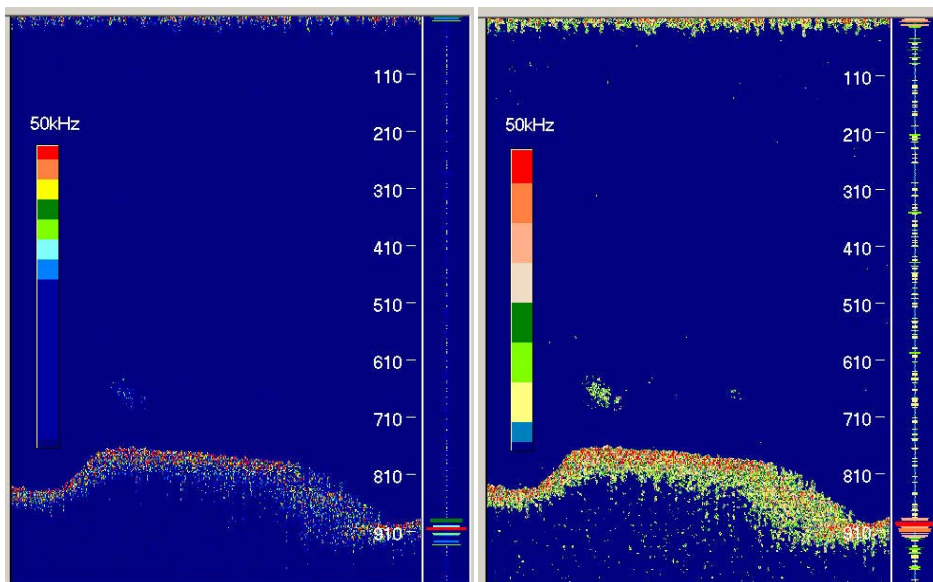
Time varying gain allows you to select a low gain initially at the surface and then allow the gain to increase as a function of time (depth). If you use time-varying gain be sure that you still use enough gain to see the bottom or the digital depth number will become unstable. This will not be a problem in deeper water since the gain will be higher. Time varying gain can also cause you to miss fish near the surface. Everything is a trade-off. You could use time-varying gain on one side of a split screen and Fixed Analog Gain on the other side to help compensate.

In split-screen mode the PcFF80 uses the screen that is set to see the deepest when calculating the bottom depth. If you are looking for fish near the surface you can maintain a stable depth reading by setting one side of the screen so that the bottom is displayed and the other side (with possibly a higher receiver gain) to see fish.

Use DSP processing in very deep water when the bottom return or fish signals are too weak to see using analog mode. DSP mode 2 gives the cleanest looking display but DSP mode 1 will allow you to lock onto the deepest bottom. The ultimate deep water response will be using DSP

mode 1 with white line turned ON. In this mode the PcFF80 will work to about 3000 feet (1000M). DSP will also allow you to find fish in deeper water than either of the analog modes

If you are not seeing fish when you know that they are directly below you then you may be using too little power or too little receiver gain. It could also be that you have the noise threshold set too high or may have the screen colors set to draw the fish in the background colors. Note the difference between the two screens below with the only difference being the screen colors.



Other CruzPro Products

- Depthsounder/Fishfinder & Speed/Log/w Temperature
- DC Volts/Amps/Amp-Hour Monitors
- AC Volts/Amps/Frequency/kW Monitor
- LPG/Petrol Gas Detectors/Alarms
- Bilge Water Alarms & Bilge Pump Controllers
- Windlass Controller/Chain Counter
- Digital Fuel Gauge & Fuel Consumption Calculator
- One and Three Tank Digital Tankage Gauges
- Smart Alternator Regulators
- Marine Security System
- RPM/Engine Hours/Elapsed Time Gauges
- Digital Oil Pressure Gauge/Alarm
- Digital Water Temperature Gauge/Alarm
- One and Three Bank Digital Volts Gauges
- Digital Amps Gauge
- Volts/ Amps/ Amp-Hour Gauges
- Precision Digital Sea Water Temperature Gauge
- 8 and 16 Amp Light Dimmers / Motor Speed Controller
- Solar Panel Charge Controllers
- 4 & 8 Channel NMEA Combiners/RS-232 Convertors
- NMEA 0183 Remote Data Repeaters/w 4 Input Channels
- Engine/Exhaust Temperature Monitor/Alarm
- Digital Pyrometer (EGT) Gauge/Alarm
- Multi-Function Gauges (10 function and 34 function)

Website: www.cruzpro.com
email: info@cruzpro.com