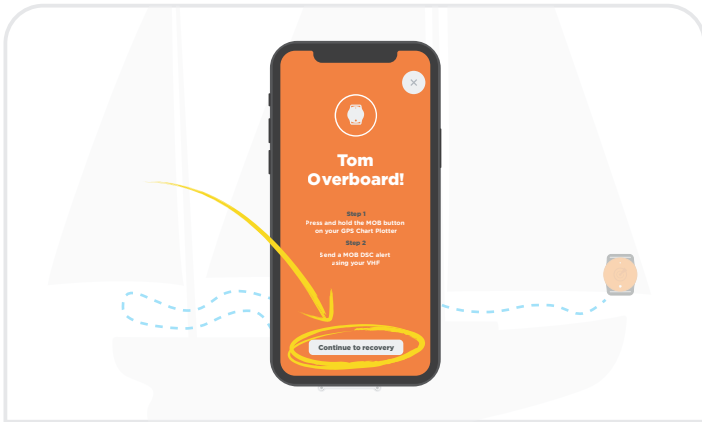
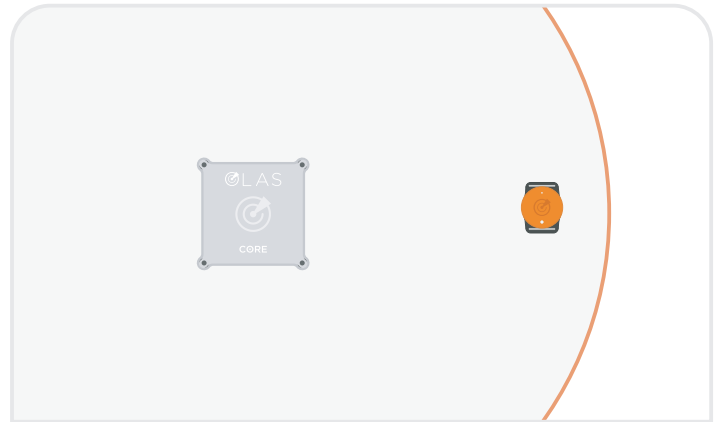


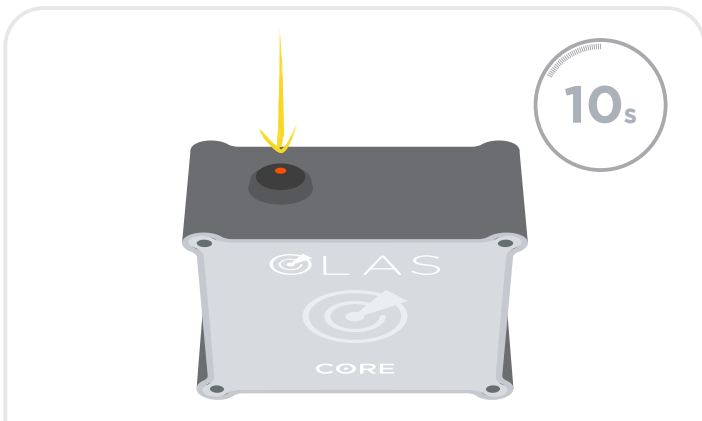
If you experience a false alarm whilst testing the system, it is likely because the connection between the tag and the Core was broken for longer than 3 seconds. If this occurs carry out the following steps to adjust your system.



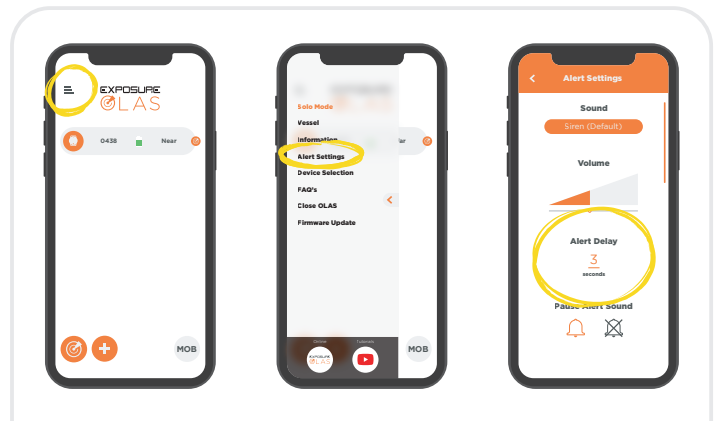
1. Accept the alarm with the OLAS App.



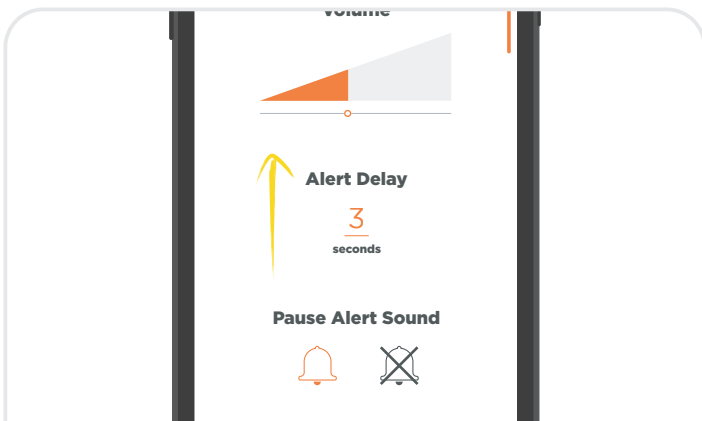
2. Bring the tag within 1 metre of the Core.



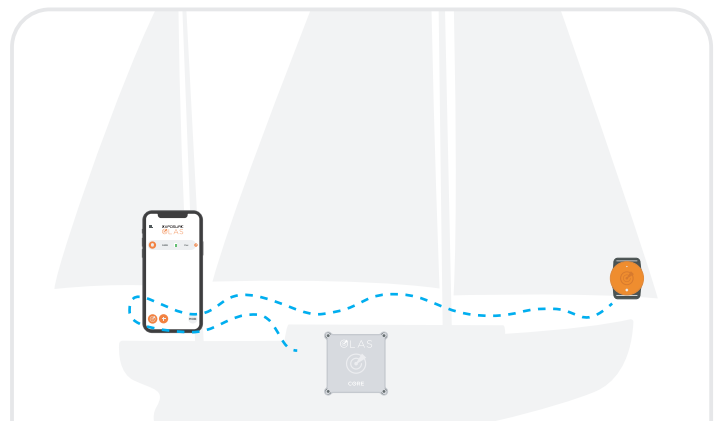
3. Cancel the alarm on the Core by pressing the control switch once. After 10 seconds the system will be tracking again.



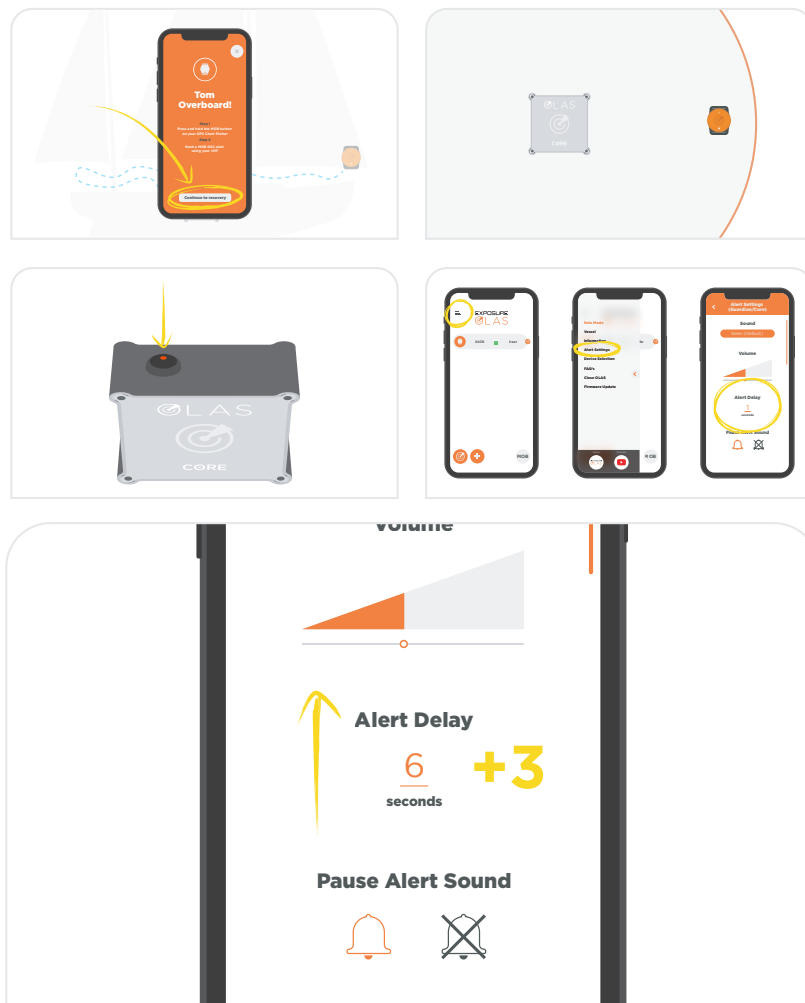
4. Navigate to the Alert Settings in the OLAS App.



5. Adjust the Alert Delay to 6 seconds. This means if the connection between the tag and the Core is broken for longer than 6 seconds the alarm will sound.



6. Walk to the location where the tag previously set off the alarm and then continue walking around the vessel.



7. If a false alarm sounds again return to step 1 and increase the Alert Delay at step 5 in increments of 3 seconds.

**If false alarms continue after 15 seconds the Core should be moved closer to the point at which the alarm is being triggered, or an additional OLAS Extender is required to cover the 'black spot'.**