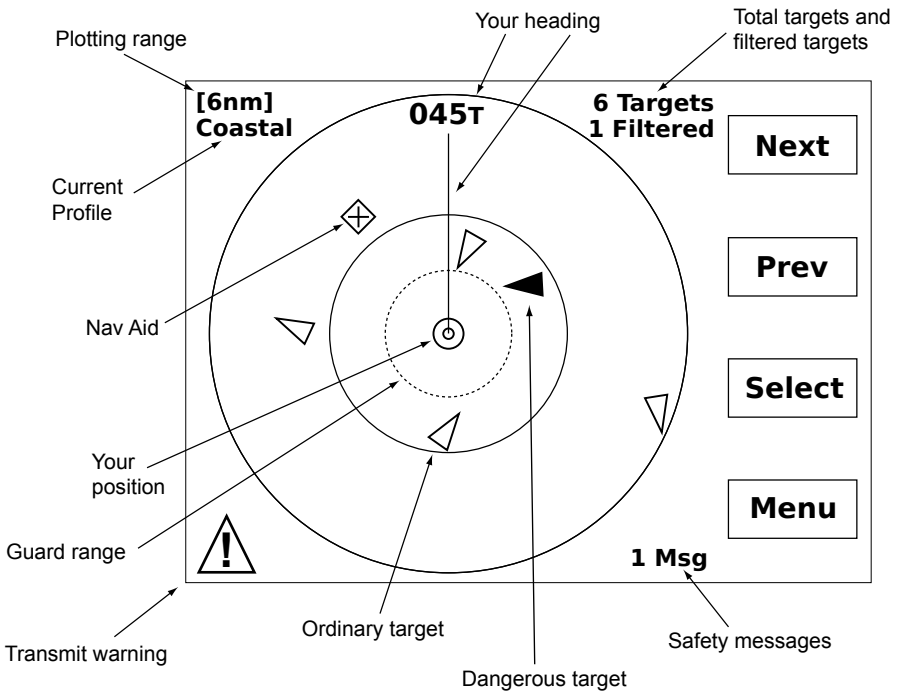


# AISWatchMate® WMX850 Getting Started Guide



△ Triangle points in the direction of the target's heading.

▲ This target meets one or more of your alarm criteria.

⊕ An aid to navigation.

⊗ Search and rescue transponder (AIS SART).

⊙ Target is marked as a member of your "fleet".

▣ Selected target. Press the *Select* button to view the complete target details.

✕ Target is "lost". No AIS data has been received from the target within the expected intervals.

⬆️ Display is oriented North-Up for this profile. Use setup to change.

⚠️ AIS data is not being transmitted. Check the AIS Status screen. You must configure your vessel MMSI in order to transmit.

## VHF and GPS Antenna Information

A dedicated VHF antenna or Vesper Marine AIS/VHF Antenna Splitter is required. Mount the antenna as high as possible and as far as practical from any existing VHF, HF or radar antennas. Make sure your VHF antenna is well tuned at the AIS end of the band (VSWR 2:1 or less at 162MHz).

**CAUTION: Never operate this device (except on USB-only power) unless it is connected to a suitable VHF antenna or Vesper Marine Splitter.**

The AIS*WatchMate* has an internal GPS antenna facing upwards which requires a clear view of the sky. You may find that it works under a dodger, hardtop or other non-metallic structure. However, if you are mounting the display in a location which will not provide adequate GPS signal coverage then you must install a dedicated GPS antenna. You cannot share an existing GPS or GPS antenna. To ensure compatibility and achieve maximum performance, use only a Vesper Marine GPS antenna.

## Using your AIS*WatchMate* when powered by USB

You can power the AIS*WatchMate* using only the USB connection. This allows you to configure the AIS*WatchMate* or use it as an AIS receiver and GPS. However, when powered solely by USB it will not transmit any AIS data or trigger an external alarm. The maximum display brightness will also be reduced.

## Configuring Your Vessel Details

Until you configure your vessel details using the AIS Transceiver Setup Screen, the AIS*WatchMate* will not transmit. However, you will be able to receive AIS and GPS data. To configure the transceiver you need an MMSI number which is assigned by the appropriate authority in your country.

**WARNING:** Once entered, you cannot change the MMSI number. If you need to change the MMSI, please contact your authorized dealer or Vesper Marine.

<b>AIS<i>WatchMate</i> WMX850 Wiring</b>	
Red	DC positive (+) (12-24 volts) <b>Do not connect directly to battery.</b> Always use a 2 amp fuse or circuit breaker. To extend, use 16AWG min.
Black	DC negative (-)
Gray	NMEA data out (+)                      38400 baud GPS & AIS data (default)
Yellow	NMEA data out (-)
Green	NMEA data in (+)                      4800 baud (default)
White	NMEA data in (-)
Blue	External alarm voltage (+). 150mA maximum. See the owner's manual on the enclosed CD for further details.

**Please see the enclosed CD for detailed installation instructions**

CPA	Closest point of approach in nautical miles. The nearest a target will come to your vessel if both maintain their course and speed.
TCPA	Time until closest point of approach will occur (minutes and seconds).
BRG	Bearing from your vessel in degrees magnetic, true or relative.
RNG	Range from your vessel in nautical miles.
SOG	Speed over ground in knots.
COG	Course over ground in degrees true or magnetic.
HDG	Heading in degrees true or magnetic.
ROT	Rate of turn shown as direction and degrees per minute.
IMO	International ship registration number.
MMSI	Maritime Mobile Service Identity. Required for all AIS transceivers.

AIS data is received at various intervals. As a result, you will see the MMSI number instead of the vessel name until more data has arrived.

## Alarm Types

*Guard alarm* - based on each target's current distance from your vessel.

*CPA alarm* - there are several settings associated with CPA alarms: CPA alarm distance, time until CPA (TCPA), target speed and your vessel speed. The CPA alarm distance indicates which targets will trigger the alarm. The other settings suppress alarms if the TCPA is too great, or either vessel's speed is too slow. Help for these, and all other settings, is displayed on each setup screen.

## Muting Alarms

Alarms are muted for each individual target. All other targets remain active.

## Profiles

Alarm and filter settings are grouped into four profiles (anchored, harbour, coastal, offshore). You can change the settings for each profile and switch between profiles at any time. Select the current profile from the main menu.

## Filters

You may filter targets based on their speed, range or CPA. Filters can be used to reduce clutter. Use setup to establish filters for the current profile.

## Setup

To change alarm and filter settings associated with a profile, you must select the profile prior to entering setup mode. Setup mode is accessed from the main menu.

## Target List

Shows targets in priority order. Particularly useful when there are many targets and the screen is cluttered.

## Warnings

The *AISWatchMate* works in conjunction with other vessels and systems such as AIS transponders and GPS. The accuracy of this device and the AIS system can be affected by many factors, including equipment failure or defects, environmental conditions and incorrect installation, handling or use. Vesper Marine does not warrant that this product is error-free. It is the user's responsibility to exercise common prudence and navigational judgement. This device should not be relied upon as a substitute for such prudence and judgement. Always maintain a permanent watch so that you can respond to situations as they develop.

The prudent mariner will not rely on a single aid to navigation. The user should verify the information obtained from the *AISWatchMate* is in accordance with expected situations and conditions. The information is not guaranteed to be accurate or reliable and the *AISWatchMate* is not a substitute for proper seamanship.

**Vesper Marine Limited cannot be held liable for any injury, damage or loss, caused by, during, or because of the installation, use or inability to use this device. The *AISWatchMate* is to be installed and used entirely at your own risk. By installing and/or using the *AISWatchMate* you fully accept this risk and agree to hold Vesper Marine Limited harmless.**

Take care when cleaning to avoid damage:

- Be careful when wiping the display screen to avoid scratching. Use a clean soft damp cloth.
- Do not use acid, ammonia, solvents or any abrasive products.

## Trademarks and Copyrights

*AISWatchMate* is a registered trademark of Vesper Marine Ltd. All other product names are trademarks or registered trademarks of their respective owners.

Copyright © 2010, Vesper Marine Ltd.

Unless otherwise indicated, all documentation and operating software contained within this product or distributed with this product is copyrighted by Vesper Marine Ltd. All rights are reserved.

  
vespermarine

Westhaven Drive, St. Mary's Bay  
PO Box 91164, Victoria Street West  
Auckland 1142  
New Zealand

+64 (0)9 950 4848

[www.vespermarine.com](http://www.vespermarine.com)  
[support@vespermarine.com](mailto:support@vespermarine.com)