



Commander Thermal
Marketing Plan



STEINER COMMANDER THERMAL

Steiner has always been renowned for the best optical performance, especially in rough seas and challenging lighting conditions. With the Commander product line, we have spent years developing the finest optics on the market for ultimate optical performance and reliability. Our commitment to enhancing the best observation experience led us to expand the Commander family into the world of digital thermal imaging technology.

The Steiner Commander has always been a guarantee of ultimate safety and support at sea; the new Commander Thermal will not only meet but also further elevate this standard. Today, we promise you outstanding observation performance as always, along with technological innovation and reliability.

With its advanced Quantum Vision technology, we guarantee outstanding image quality you can rely on. The Commander Thermal device from Steiner offers the perfect equipment for all water sports enthusiasts, providing them with safety and precise navigation on the water as well as the most demanding challenges. It provides essential support when navigating during the day or in complete darkness. It also ensures clear visibility of lighted and unlighted buoys, floating objects, other boats and harbor entrances.

STEINER THERMAL DEVICE FOR MARINE

WHY DO YOU NEED A THERMAL DEVICE FOR THE SEA?

A thermal imaging device is the perfect complement to an analog binocular for sailors for the following reasons:

Improved Visibility at Night and in challenging situations: The thermal imaging device complements the sailor's equipment for situations in complete darkness and adverse conditions such as fog. Thanks to its advanced thermal imaging technology, it does not require a light source and provides sailors with clear vision, even without visible light.

Early Detection of Dangers: A thermal imaging device can not only detect visible objects but also the heat they emit. This means it can identify obstacles, other vessels, buoys, debris, and even people in the water early on. This significantly enhances safety at sea.

Search and Rescue: In search and rescue scenarios, a thermal imaging device is invaluable. It greatly facilitates the location of missing persons, especially in darkness or poor visibility conditions, and can save lives.

General Safety: Overall, the thermal imaging device contributes to safety at sea by helping sailors better monitor their surroundings in nearly all lighting conditions, both day and night.

In summary, a thermal imaging device offers significant advantages over analog binoculars, especially in challenging lighting and visibility conditions, early hazard detection, and search and rescue operations at sea. It is, therefore, a valuable addition to a sailor's equipment, significantly enhancing safety and efficiency at sea."



QUANTUM VISION™

THE HEART OF THE COMMANDER THERMAL DEVICES

Quantum Vision is the perfect combination of best possible **THERMAL SENSOR**, state-of-the-art **DISPLAY** and advanced **SOFTWARE DEVELOPMENT**, all that combined with great **USABILITY** and the legendary **STEINER RUGGEDNESS**

QUANTUM VISION™

Quantum Vision™ is a breakthrough technology that offers the perfect combination of state-of-the-art thermal sensor, excellent display quality and high-end software development. With its first-class ease of use, simple handling and legendary Steiner robustness, Quantum Vision™ sets new standards in the world of thermal imaging.

SOFTWARE

Quantum Vision™'s high-end software development enables advanced features such as picture-in-picture viewing, image enhancement, zoom and image recording. The intuitive user interface makes operation simple and user-friendly, even for beginners. Quantum Vision™ software is regularly updated to improve performance and functionality and provide users with the best possible experience.

CORE/THERMAL SENSOR

The Quantum Vision™ thermal sensor uses the latest technology to capture high resolution thermal images of the highest quality. Whether it's day or night, Quantum Vision™ delivers outstanding thermal images that allow objects to be detected in any environments and conditions.

DISPLAY

The Quantum Vision™ display quality is impressive. With high resolution and vivid color reproduction, the OLED display provides clear and detailed thermal images in real time. It allows the user to see fine details and make accurate decisions, whether as a professional skipper, sailor, motorboat driver or during an expedition.

QUANTUM VISION™

- Sharpest thermal images on the high seas thanks to the state-of-the-art 640x480 thermal sensor
- High speed software generates the best image in all weather conditions (rain, fog)
- High-quality OLED display with a resolution of 1024x768 improves the recognition of boats, persons and harbor entrances
- Very stable image thanks to the 50Hz frame rate which will allow comfortable observation for long period of time.

USABILITY

- The on/off button is conveniently located for easy thumb operation
- Ergonomic and changeable eyecup for comfortable observation at all times
- Continuous working time more than 8.5 hours with on hand exchangeable batteries and power bank compatible
- 6 inlay button design smart positioned for intuitive usage and easy adjustments (Short-cuts pre programmed)
- Perfected accessories kit
 - Objectiv-Cover
 - Handstrap (left and right handed)
 - Ocular Raincover
 - High-End Carry-Bag
 - High-End Carry-Strap

RUGGEDNESS

- Durable Makrolon polycarbonate housing, for a nearly indestructible surface
- Working temperature -10°C +50°C Storage temperature -30°C +60°C
- Water-resistant
- Non water slip rubber armoring guarantees the legendary Steiner ruggedness

COMMANDER THERMAL - PRODUCT

STEINER 
Nothing Escapes You

COMMANDER THERMAL

PERFECTION BY QUANTUM VISION™





PRODUCT TEXT

The Commander Thermal delivers ultra-sharp thermal images for unmatched safety at sea - even in total darkness, rain or fog - a real must-have companion.



Superior navigation: The Commander Thermal offers sailors and adventurers optimal navigation capabilities, even in challenging conditions such as seas, darkness and bad weather. It accurately displays visible and unlit buoys as well as harbor entrances in low visibility conditions.

Maximum safety at sea: this device not only ensures excellent night vision, but also detects potential hazards such as other boats or obstacles at an early stage. As a result, it makes a significant contribution to accident prevention and increased safety at sea.

Ideal companion for expeditions: Adventurers exploring remote areas appreciate the reliability and versatility of the Commander Thermal. Thanks to its Quantum Vision technology, temperature differences can be clearly displayed, making it easier to detect living creatures and objects with the lowest heat signature.

Compact and lightweight: The Steiner Commander Thermal is compact and lightweight enough to be easily carried in luggage or on boats and ships with limited storage space. This means it is always at hand when needed.

Impressive Range: The device has an impressive range and is specifically designed to quickly and reliably detect objects in difficult lighting conditions such as darkness, fog, or even during the day to clearly identify distant targets and objects.

Steiner Connect: Capture and share memories live or at home with friends and family. With the Steiner Connect app connection, you can save and share images and videos at any time.

Commander Thermal – Item.–No. 8700000109

Detector	Resolution	640 x512 @12µm	Housing	Dimensions	210 x 80 x 68 mm
				Weight	514 g
				Eyecup	Ergonomic
Lens	Focal length	35mm F1.0		Warranty	2 years
	Field of view at 100m	12.5° x 9.4°			
	System magnification	1–8x (digital)			
	NETD	< 35mK	Battery	Typ 18650	Use batteries with a length of 67mm – 71mm
Display	Display	OLED			
	Resolution	1280 x 960 Pixel			
	Output frame	50 Hz			
	Max screen size	22 inch			
	Video output format	analogue video			
	Working time	> 8,5 hours			



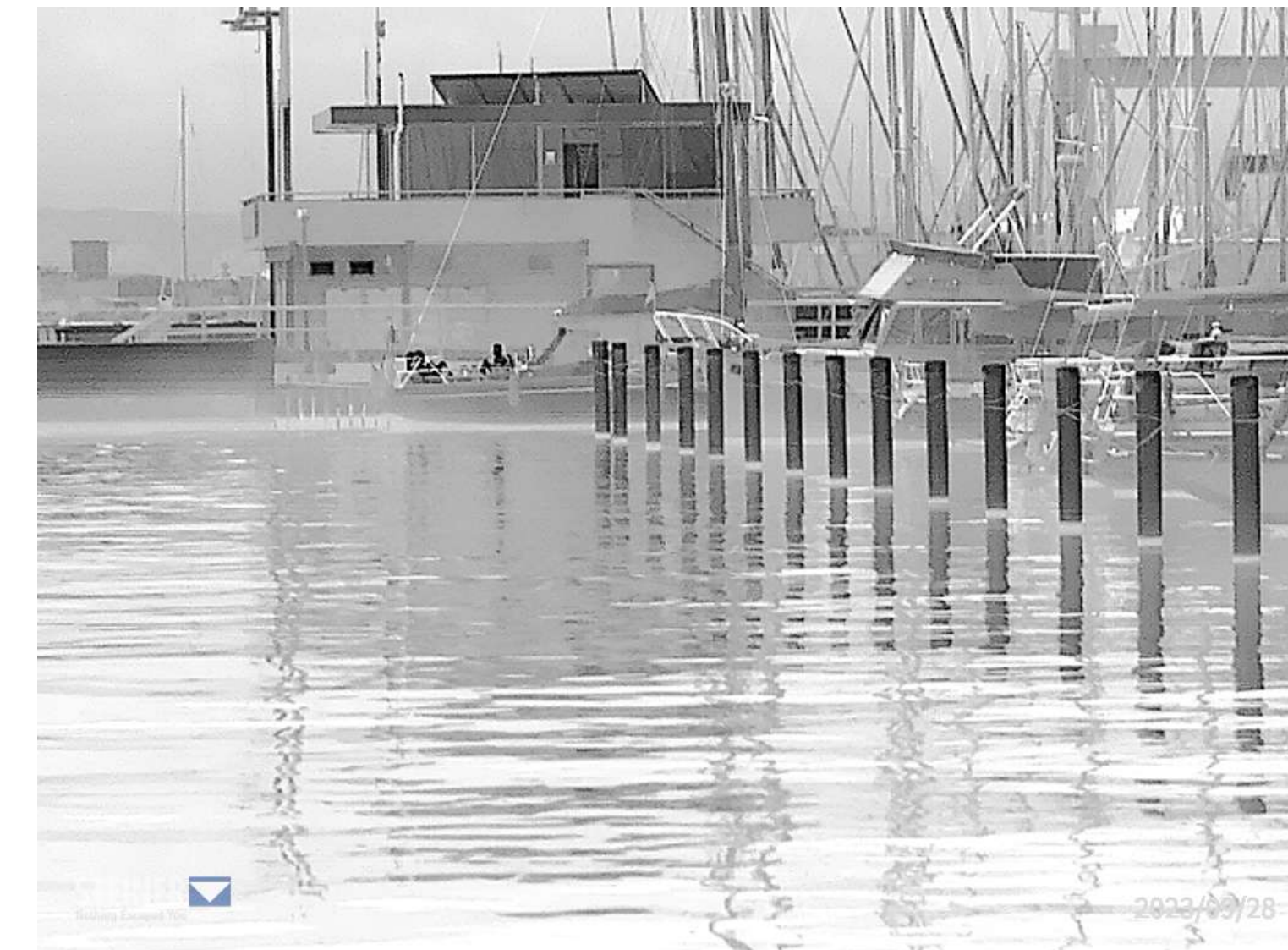
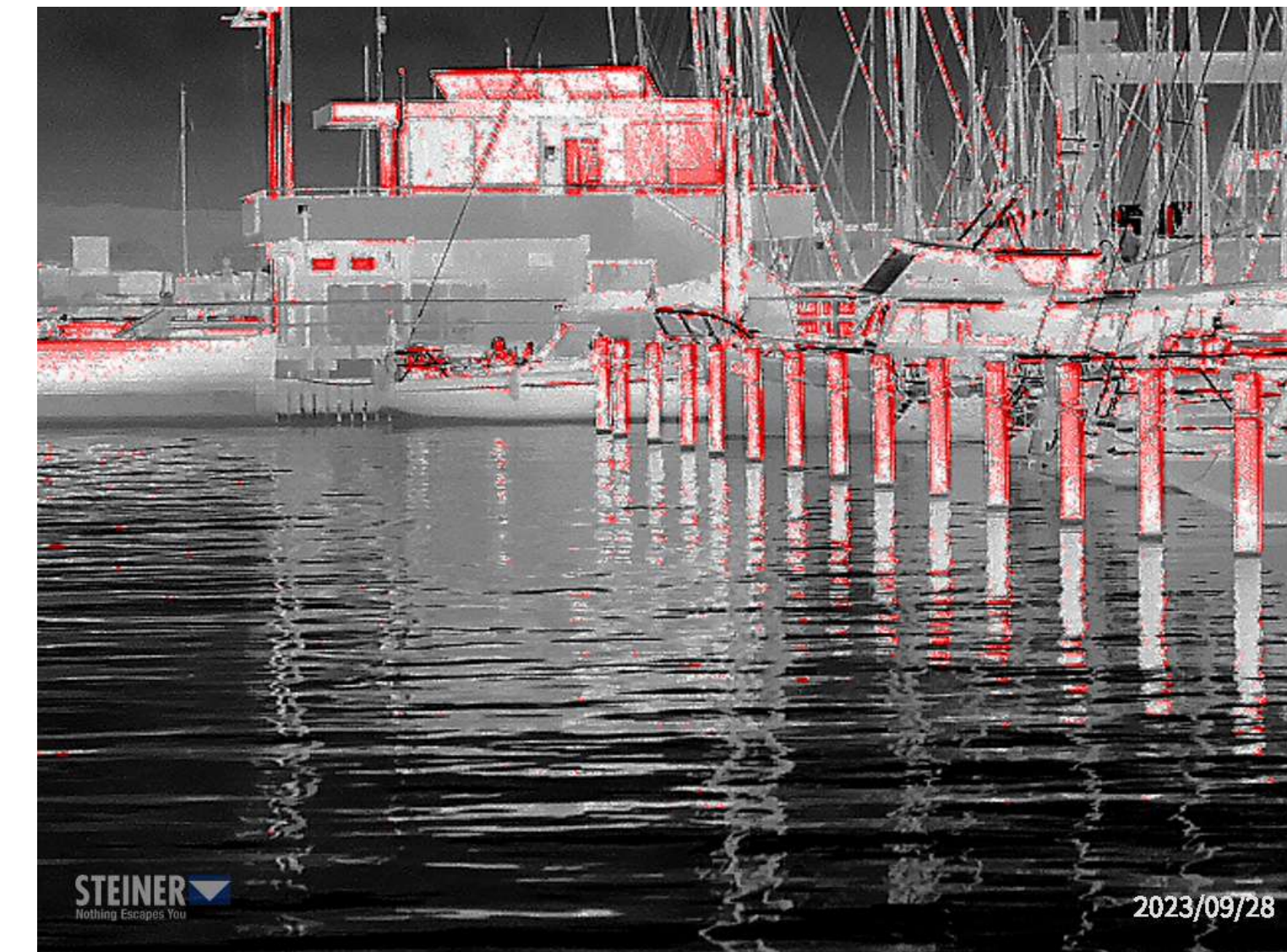
STEINER CONNECT APP

Download the Steiner Connect app from the App Store or from the Google Play Store to your mobile device (smartphone, tablet, etc.) to watch livestreams, view photos and videos conveniently, or change device settings.

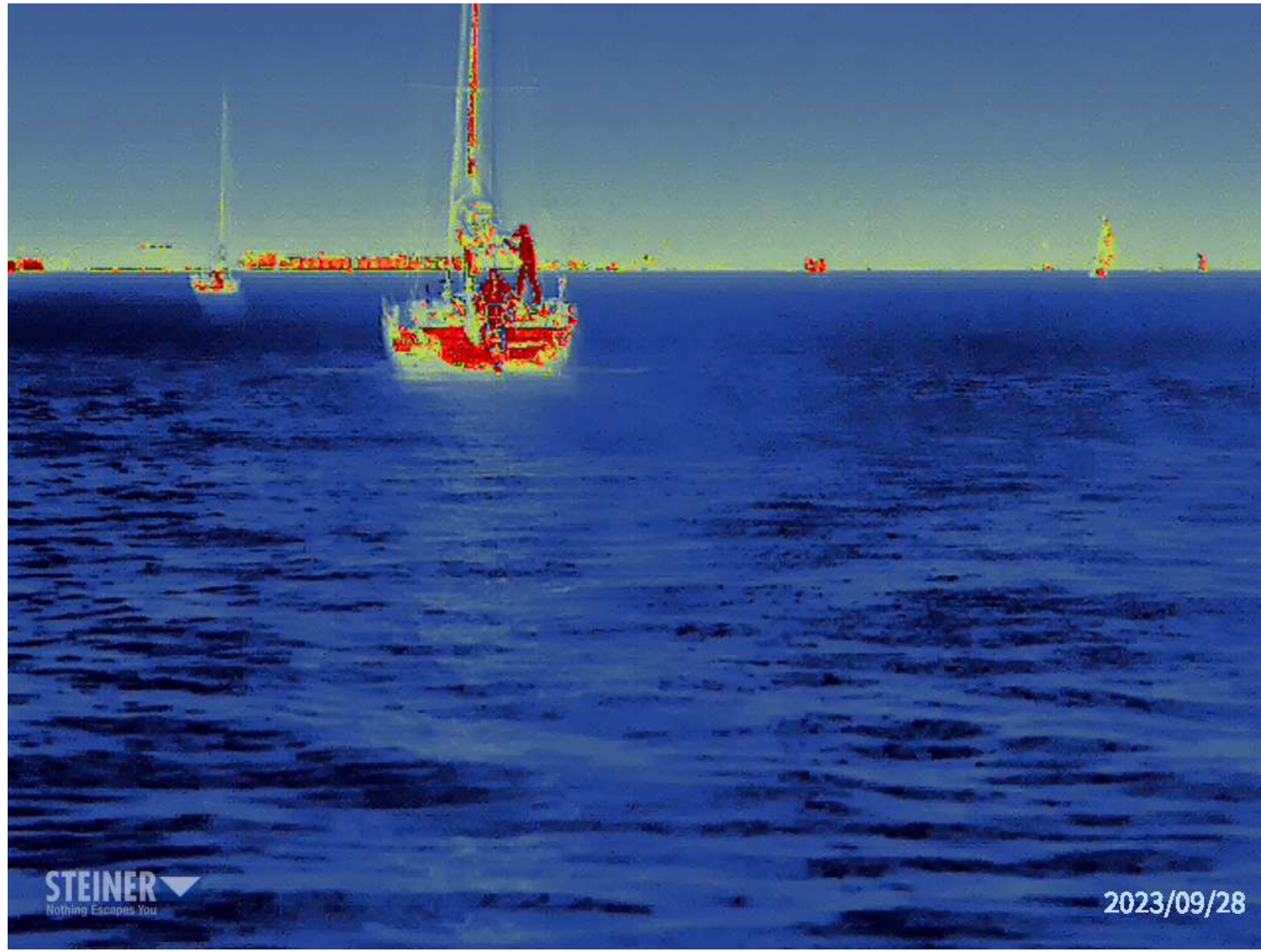
THERMAL IMAGES



THERMAL IMAGES



THERMAL IMAGES







Commander Thermal

The Steiner Commander Thermal inspires with outstanding image quality and allows precise navigation and safety for sailors, adventurers and travelers even in absolute darkness.



THANK YOU